



EDITHVALE PRIMARY SCHOOL

Edithvale Road, Edithvale, Victoria 3196
Phone: (03) 9772 1393 Fax: (03) 9772 7307
Web: www.edithvaleps.vic.edu.au
Email: edithvale.ps@edumail.vic.gov.au

Term 2—Week 4

6 May 2016

Doing the Right Thing, Working Together, Aspiring Higher & Connecting with our Community



Download Qkr and register today—the easiest way to make your School payments.

Download tiqbiz and register today—so you don't miss out on important information.



PRINCIPAL'S REPORT Mr James Whitla



There continues to be plenty going on at Edithvale Primary as we continue to evoke creativity amongst our students, staff and parent community.

Throughout Education Week we will be holding a number of activities and open mornings for prospective 2017 Foundation Parents. We have already conducted a number of tours and received a few enrolments for 2017. Our open mornings, and our increased promotion of our school at local kindergartens and early learning centres is aimed at getting as many people as possible through the door so that we can sell our great school. Our goal is for 60 students in our foundation classes in 2017.

On 27 May we will be holding a Student Free Day that looks at creating Curious and Creative Learners. This focus has come as a result of our involvement in the **“Curiosity and Powerful Learning” project**. This is the brain child of Wayne Craig - a former Regional Director and McREL International consultant - and is partly sponsored by the Myer Foundation. Our staff along with those from over 100 other schools across 4 networks throughout Victoria and Queensland is working more closely with universities (Monash and Mitchell) to try to make system wide change to teaching practice.

On Wednesday this week, a group of 7 school leaders attended a professional learning day with Wayne based on the work of Dr John Munroe and a **book titled “Curious and Curiouser.”** This was a great opportunity to find out what characteristic curious and creative people possess and gave us direction for our 27 May work. Having a close professional

relationship with Wayne has ensured we get to tap into his expertise when planning Curriculum Days like ours

Next week our Year 3 and 5 students will sit the NAPLAN tests over 3 consecutive days. Assessments are conducted in Writing, Reading, Language Conventions (spelling and punctuation) and Numeracy. Our results over the last few years have steadily been improving in a number of areas and we will see if further improvement has been made when the results are made available in early September.

The annual Student Attitude to Schools (SATS) survey was conducted last week among our Year 5 and 6 students. This data is used to help us get a feel for the environment among our senior students - what is working well, and what we might change to ensure a positive learning experience for all our students. Categories that students give feedback on include Student moral, Teacher effectiveness, School connectedness, Student motivation and Stimulating learning. Results will be out in the middle/end of next term when we will see how we are travelling against other State Schools.

Thank you to the wonderful PFA Mums who **coordinated this year's Mothers' Day stall**—as always the children were very excited as they created that special gift for their special Mum. It was great to see so many Mums enjoying a croissant and coffee and mingling in the yard today and the spirit that we are trying to engender among our great community continues to be very strong - which is something I am very proud of. We wish everyone a **very happy Mothers' Day on Sunday**.

On a personal note, I'd like to thank all those who have passed on their best wishes and kind thoughts to my wife and I upon the arrival of Sam Spencer Whitla who was born yesterday. Both Amanda and I feel very fortunate to be involved in a caring, thoughtful and friendly school community and we are touched at the number of well-wishers and their kind messages.



ASSISTANT PRINCIPAL'S REPORT

Mr Andrew Schneider

Wednesday 4 May saw a number of staff members attend another Powerful Learning Workshop with Wayne Craig. We continued to look at ways we can engage students to develop their creativity and higher order thinking skills. One of the ways we can support students to be curious as well as ask questions and find answers to them, is through units of Inquiry. Our Curriculum Day on Friday 27 May will have a curiosity-focus and we look forward to implementing our new ideas with **the students ... watch this space!**

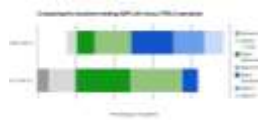
The junior-school students may have noticed that there are brand new take-home readers for them to enjoy. It was all hands on deck on Tuesday evening, going through hundreds of old take-home readers, some with coffee stains from the 90s! These new readers will help motivate students to continue practising their reading at home and further develop their skills learned at school. Thank you to Jaime, Claire and the English team for organising this massive task, as well as the other teachers who also helped out. The books that were not kept have been donated to the **brother of Mark, the 'music man', who uses them to help children at his school in Bali, to learn English. What a great initiative!**



This morning we kicked off the **Mother's Day weekend (yes my mother gets a whole weekend)** with croissants, coffee, nail painting and massages! The PFA have done a mountain of work to organise the morning; as **well as the gifts for the students' to purchase. My mum has kept every single one of the gifts I have**



bought her over the years, including the clown statue Dad and I got from the **Chemist one Mother's Day morning. I wonder what special gifts the mothers of EPS will receive this year?!**



Good luck to the Year three and five students undertaking NAPLAN next week.

I hope all mums and other special people in our lives have a great weekend.



SCHOOL COUNCIL PRESIDENT'S

REPORT

Mr Steve Smith

Last Saturday, our school hosted a successful fundraising BBQ at Bunnings in Keysborough. Thank you to all the parent volunteers and everyone that came down and supported us on the day by purchasing a sausage and/or drink. A special thank you to Nicole Butcher for organising this fundraiser, from securing the date, managing the roster and ensuring we did not run out of supplies.

The School Council has formalised several sub-committees and they are starting to meet over the next few weeks. These include the Buildings & Grounds, Fundraising, Education, Canteen, and the Finance sub-committees. These sub-committees will be involved with organising and discussing projects in their respective areas. They will meet prior to the monthly School Council meetings and report to School Council for decision making. If you are interested in being involved in any of the sub-committees, or have any good ideas please come and see me or put in a note at the office.

In April, our School Councillors attended a training session at Dingley Primary School with Councillors from other local schools. This training provided Councillors with the necessary tools and information needed to carry out our roles in the most appropriate and effective manner. The training covered the Department of Education and Training guidelines that we operate under. And it was an opportunity to learn from other local schools as to how their schools operate.

Our next School Council meeting is Tuesday 10 May.

CANTEEN ROSTER—TERM ONE

| Mon 9 | Tue 10 | Thu 12 | Fri 13 |
|---------------|---------------|---------------|--------------------|
| Nonie Hare | | Tarsha Warren | Bernadette Lydster |
| Mon 16 | Tue 17 | Thu 19 | Fri 20 |
| Anna Ericsson | Melinda Price | Sasha Dent | Nicole Markby |

QKR & TIQBIZ

Please remember to update your child's Year & Class on Qkr & Tiqbiz

GARDEN CLUB



An Exciting Opportunity!

Our school needs your help to revitalize our school gardens and provide facilities to teach our students about sustainability.

To aid this we have entered the “Back to Earth Initiative” competition where we are in the running to win up \$5000 worth of assistance to transform our school environment. The winner is chosen by vote.

We need the whole school community to go onto the web site, read about what we have proposed and vote for our project.

VOTE HERE: <http://tinyurl.com/jfk69k4>

You can vote as many as times you like, but only once a day. The closing date is Sunday 22 May.



ENTERTAINMENT BOOKS

A number of you have already shown your support by purchasing a 2016 | 2017 Entertainment™ Book or Digital Membership. With over \$20,000 worth of valuable offers, have you thought about buying a Membership for your Mum for Mothers Day or for other family members or friends?

For every Membership we sell, 20% of the purchase price goes directly to us. The money we raise this year will go to support our School.

Purchase your Entertainment™ Book now to ensure **you receive it in time for Mother's Day, or take advantage of the great offers instantly on your smartphone with an Entertainment™ Digital Membership.**

Please click here to order from us to-day!

www.entbook.com.au/189e452

For more information about our fundraising or how to get your Entertainment™ Membership please call 0397721393 or email

wishart.sandie.j@edumail.vic.gov.au

CANTEEN Mrs Diane Cameron

We have had some wonderful weather during the start of this term and we have sold a large quantity of iced treats. Also very popular with lunch orders is the fruit salad. Our fruit salad is made fresh daily by myself or canteen helpers. We have apples, grapes, pineapple, cantaloupe, strawberries, blueberries, kiwi fruit and orange. Some items may not be used due to prices and **what's not in season.** Some students and staff have their fruit salad with yoghurt. The yoghurt we use is from The Yoghurt Company in Carrum Downs.

Due to the increasing use of Qkr, our wonderful school Business Manager, Sandie Wishart (Queen of Qkr) has made some changes to ordering wraps, sandwiches and rolls. This may help with those who want certain items deleted from their sandwich, roll or wrap.

There will be a special lunch day at the end of the term. Details will be sent out towards the end of the term.

Thanks to all my parent helpers who have helped out over the last fortnight.

EDI'S MATH'S CORNER

How did you go solving last week's Sudoku?

| | | | | | | | | |
|---|---|---|---|---|---|---|---|---|
| 9 | 6 | 3 | 1 | 2 | 5 | 7 | 4 | 8 |
| 7 | 4 | 2 | 3 | 6 | 8 | 9 | 1 | 5 |
| 5 | 8 | 1 | 4 | 7 | 9 | 2 | 3 | 6 |
| 8 | 3 | 6 | 5 | 4 | 2 | 1 | 7 | 9 |
| 1 | 9 | 5 | 7 | 3 | 6 | 8 | 2 | 4 |
| 2 | 7 | 4 | 8 | 9 | 1 | 5 | 6 | 3 |
| 3 | 1 | 9 | 6 | 5 | 7 | 4 | 8 | 2 |
| 6 | 2 | 7 | 9 | 8 | 4 | 3 | 5 | 1 |
| 4 | 5 | 8 | 2 | 1 | 3 | 6 | 9 | 7 |

Here's the solution!



What's been happening in Maths with the Year 2s? Let's check in...

Students have been learning about the features of 3D Shapes. They were then asked to use what they have learnt in class to then construct 3D shaped using different materials.

They came up with some fantastic examples!



BUNNINGS BBQ 2016



Thank-you to the following people for donating their time to assist at our Bunnings BBQ held on the weekend:
Paul & Bridget Arden, Kath, Jackson & Sam Barratt, Janine Bell, Kirsty & Jessie Brennan, Kathy Bourne, Chantelle Burgess, Nicole, Kane & Lauren Butcher, Lisa Carter, Sasha Dent, Jack & Taj Dix, Jill Donnelly, Mark Eddey, Martin Ellis, Trish Fay, Nonie & Maddie Hare, Melissa Heath, Alex Heenan, Cherie & Maya Johnston, Bernadette Lydster, Heath McMillin, Gaz Morris, Kim Murphy, Jenny Nickols, Andrew Rolfe, Andrew Schneider, Steve & Liam Smith, Max Telfer, Fiona Vaular, Isabelle Vicendise, Jodi Vuat and James Whitla.



Thanks also to everyone who supported our school by purchasing a sausage &/or drink on the day. The day was an extremely successful one with over 570 sausages sold and almost \$1,200 being raised to go towards various gardening projects around our school.



Did you know that the home is the most common location where children are injured?

Kisafe Victoria are running a free child injury prevention information session with the Aspendale Gardens Community Service.

The presentation will provide advice and practical solutions that you can use in your own home to help reduce the risk of injury for your children.

Tuesday 17 May 2016
7.30 – 8.30pm

- Safely transporting children (choosing and using a suitable child car restraint)
- Burns and scalds
- Drowning and near drowning
- Falls
- Poisoning
- Choking and suffocation
- Dog bites and pet safety
- Nursery furniture and equipment safety

Perfect for new parents, grandparents and carers



FREE | Limited Places | Bookings Essential 9587 5955

Aspendale Gardens Community Service
103-105 Kearney Drive, Aspendale Gardens 3195
9587 5955 | www.asgcm.org.au | enquiries@asgcm.org.au



Gentle and Caring Services
Children's Dental Therapist
General, Cosmetic
& Implant Dentistry
Exams for children under 4 free

9590 9120
www.dentalharmony.com.au
286 Wells Road,
Aspendale Gardens



dental harmony

Gourmet Grocery & Butchery

Now open on Main St



SPECIALTY GROCERIES
ORGANICS

FREE-RANGE & GRASS-FED MEAT
NITRATE-FREE BACON

the grocery store

THE MORDIALLOC GROCERY STORE
562 MAIN ST, MORDIALLOC

FOLLOW US ON FACEBOOK AND INSTAGRAM

Develop the confidence of a winning smile

Take advantage of our **free initial visit** and get some professional advice from a specialist orthodontist today. **No referral is necessary.**



straight orthodontics
health | harmony | confidence

45 balcombe rd, mantone 9585 8000 straightorthodontics.com.au

Edithvale Physiotherapy

Tried everything? Try us!

Physiotherapy • Massage • Myotherapy • Pilates



Tel (03) 9772 3322

285 Nepean Hwy, Edithvale psmgroupp.com.au





MORDIALLOC NEIGHBOURHOOD HOUSE



FREE HEARING TEST

Australian Hearing will be visiting the Mordialloc Neighbourhood House on:

THURSDAY, MAY 12:

9.00am – 11.30am

to conduct FREE HEARING TESTS

Customers will receive a free 15 minute hearing test and information on their hearing health.

Free hearing tests are open to the public.

If you would like to make a booking, please phone:

Mordialloc Neighbourhood House; 9587 4534

457 Main St. Mordialloc.

My Golf

My golf is an Australian junior golf program. It is a fun, safe and healthy way for kids between the



ages of 5-12 to start learning the basics of the game. Every MyGolf centre across Australia has the same goal; to make golf a fun experience for all kids. These programs allows you to get out onto the golf course and demonstrate your skill with the added opportunity to attend golf tournaments.

If anyone is interested in joining the program details are below:

PGACLP Sandhurst Junior Eagles Program

After School and Weekend Classes

To register visit

www.mygolf.org.au or call 8320 1902

Making it possible

Information sessions for
parents and family carers of a
child with a disability



Alfred Health Carer Services invites parents and family carers of a child with a disability aged up to 18 years of age to a series of planning and advocacy workshops. These will be facilitated by the Association for Children with a Disability (ACD).

These workshops are designed to provide additional skills to assist you in your caring role. Participants are required to attend both workshops.

Workshop 1 - Planning

- Recognising your strengths and skills
- Communicating and building positive relationships
- Further developing your knowledge and resources
- Identifying goals and planning for you and your child
- Information about the National Disability Insurance Scheme (NDIS)

Workshop 2 - Advocacy

- Understanding what the term advocacy means
- Developing advocacy skills to achieve better outcomes
- Increasing confidence to advocate on behalf of your child

Transport and respite may be arranged if required on request.

Association for
Children with a Disability

When
Monday 2 May and
Monday 9 May, 2016

Where
Yarrabrah School
23 Mill Street
Aspendale
(Melways Ref 92 H3)

Time
Registration: 9.45am
Start: 10.00am
Concludes: 2.00pm

Refreshments
Morning tea and a light
lunch will be provided

Cost
These are free workshops
for eligible family carers

RSVP
Your School
Wednesday 27 April

KUMON CHELSEA EDUCATION CENTRE

5 Blantyre Avenue
Chelsea 3196

Math

(arithmetic, fraction, algebra)

English

(grammar, spelling, reading
comprehension)

Please call the instructor,
Lena Gvirtzman
on **0402 065 154** for an appointment

The benefits of Kumon method will be
explained.

Free testing in Maths and/or English

Also offering **2 weeks free trial**

Then you can decide if that's what your
children need



Alfred Health Carer Services
(A Commonwealth Respite and CareLink Centre)
FREECALL * 1800 052 222
Carer Support and Respite (24 Hours)
www.carersouth.org.au



The year continues and along with it our exceptional extra- curricular activities program here at EPS. Thank you to all the staff, parents and friends of our school community who have volunteered to run an activity. The students have absolutely enjoyed trying out new things, developing skills and having fun during the extra- curricular activities program last term. Here is a short description of each activity with a timetable below:

All About Race Cars

She's back! Imagine what it would be like around fast cars, loud engines and screeching tyres. Learn all about what it takes to be a race car driver up close and personal!

Cheerleading

The ever-so-talented EPS Cheer Team will be practising and training hard this term for our first competition in September with the AASCF (Australian All Star Cheerleading Federation). Wish us luck!

Design with Beads

Create cool, crazy and colourful designs using only beads and some heat! You don't want to miss out on this fun activity!

Drama Club

Flashing lights? Screams of adoring fans? Mastery of your acting skills awaits you yet again! Back by popular demand, come and be a part of what's sure to be an exciting, energetic and expressive group.

Environment

Stop and smell the roses! It's time to be a true environmentalist. Learn about all green and growing things while keeping our school beautiful and clean!

Everything Sweet (decorating)

The sweet delicious goodness continues on this term! Learn all about the art of tastefully decorating yummy cupcakes and biscuits. It's first in best dressed so make sure to line up for this tasty activity!

French Poetry Competition

Last year EPS students who participated in the French Poetry Competition dazzled the school with their talent and eloquent speaking. Once again, Mme Snow will be working with passionate students to recite beautiful poems in French. We wish everyone the best of luck!

Gymnastics Club

Want to learn new tricks? Or maybe you would like to challenge yourself and your flexibility. Come and try out the exciting activities in store for you here at Gymnastics Club!

Hip Hop

The Hip Hop team will be training hard this term for our first competition with AASCF (Australian All Star Cheerleading Federation). We are so excited to showcase the different techniques and grooves!

Indoor Soccer

Test your dribbling skills with a fun indoor soccer game amongst your year level. Master new skills and technique while learning to be a great team player!

Lego Club

Unleash the power of your building skills and come create with us at Lego Club! Whether you are interested in building houses, moats, castles or rockets there will be just the thing for you.

Master Art Class

Are you a master artist and are looking to practise or improve a skill or technique? If you are, then this is the activity for you! Our visiting art master is only here twice this term so make sure to come along!

Origami

Explore the many ways you can create intricate and interesting things with just one simple material... paper! Good at following instructions? Or maybe you are just ace at folding and cutting, origami awaits!

Relaxation Club

Take a deep breath in, now take a deep breath out... It's time to learn about all things relaxation. Come and find your inner peace...

SRC

The Student Representative Council meets once every fortnight to discuss events and activities for the whole school. We are currently preparing fun activities and fundraisers for this term.

Term 2 EPS Extra-curricular activities timetable

| <u>DAY</u> | <u>Dates</u> | <u>Extra- curricular Activity</u> | <u>Who</u> | <u>When</u> | <u>Where</u> | <u>With</u> |
|------------|---|--|------------|-------------|-----------------|--|
| Monday | MAY 2 MAY 9 MAY 16 MAY 23 MAY 30 JUNE 6 JUNE 13 | French Poetry Competition | Year 3 - 6 | TBA | TBA | Madame Sylvie Snow |
| | MAY 2 MAY 9 MAY 16 MAY 23 MAY 30 JUNE 6 JUNE 13 | Everything Sweet (decorating) <i>Maximum of 24 students for each session. First in best dressed! Year level will be announced on the day.</i> | Year 3 - 6 | 1:45 - 2:20 | 3A | Lisa Carter (parent) and Mrs Sharlotte Roa |
| Tuesday | MAY 5 MAY 10 MAY 17 MAY 24 MAY 31 JUNE 7 JUNE 14 | Environment Club | Year F - 6 | 1:40 - 2:00 | Foundation C | Svetlana Desousa (parent) and Miss Amy Syme- Ross |
| | MAY 5 MAY 10 MAY 17 MAY 24 MAY 31 JUNE 7 JUNE 14 | French Poetry Competition (every fortnight) | Year 3 - 6 | 1:40 - 2:00 | TBA | Madame Sylvie Snow |
| | MAY 5 MAY 10 MAY 17 MAY 24 MAY 31 JUNE 7 JUNE 14 | Lego Club | Year F - 1 | 1:40 - 2:00 | Foundation B | Miss Jamie Rohan |
| | MAY 5 MAY 10 MAY 17 MAY 24 MAY 31 JUNE 7 JUNE 14 JUNE 21 | Cheerleading | Year 3 - 6 | 1:35 - 2:20 | Hall | Mrs Kerrie Evans and Bri Evans (coach) <i>*this team will be competing at the AASCF (Australian All Star Cheerleading Federation) dance division.</i> |
| Wednesday | MAY 4 MAY 11 MAY 18 MAY 25 JUNE 1 JUNE 8 JUNE 15 | Relaxation Club | Year 1 - 2 | 2:00 - 2:25 | 2A | Miss Goudey |
| | MAY 4 MAY 11 MAY 18 MAY 25 JUNE 1 JUNE 8 JUNE 15 | French Poetry Competition | Year 3 - 6 | TBA | TBA | Madame Sylvie Snow |
| | MAY 4 MAY 11 MAY 18 MAY 25 JUNE 1 JUNE 8 JUNE 15 | Drama Club | Year 3 - 6 | 1:35 - 2:00 | Learning Centre | Miss Dinelle Bates |

| | | | | | | |
|----------|--|---------------------------|------------------|--|--------------------|---|
| | MAY 4 MAY 11 MAY 18 MAY 25 JUNE 1 JUNE 8 JUNE 15 | Design with beads | Year F - 2 | 1:40 - 2:20 | 1B | Elly Borland with Miss Jess McGeachin |
| | MAY 4 MAY 25 | Origami | Year 3 - 6 | 1:45 - 2:20 | 3A | Bec Augustine (parent) with Mrs Charlotte Roa |
| | TBA | All About Race Cars | Year 2 Year 3 | 1:00 - 1:20 1:20 - 1:40 | TBA | Melinda Price (parent) with Mr Andrew Schneider and Year 2-3 teachers |
| Thursday | MAY 5 MAY 12 MAY 19 MAY 26 JUNE 2 JUNE 9 JUNE 16 | French Poetry Competition | Year 3-6 | TBA | TBA | Madame Sylvie Snow |
| | MAY 5 MAY 12 MAY 19 MAY 26 JUNE 2 JUNE 9 JUNE 16 | Gymnastics Club | Year F - 2 | 2:00 - 2:30 | Hall | Ms Melinda Hatton |
| Friday | MAY 6 MAY 13 MAY 20 MAY 27 JUNE 3 JUNE 10 JUNE 17 JUNE 24 | Hip Hop | Year 4 - 6 | 1:40 - 2:20 | LC Gallery or Hall | Mrs Charlotte Roa <i>*this team will be competing at the AASCF (Australian All Star Cheerleading Federation) dance division.</i> |
| | MAY 6 MAY 13 MAY 20 MAY 27 JUNE 3 JUNE 10 JUNE 17 | French Poetry Competition | Year 3-6 | TBA | TBA | Madame Sylvie Snow |
| | MAY 6 MAY 13 MAY 20 MAY 27 JUNE 3 JUNE 10 JUNE 17 | SRC | Year 1 - 6 | 1:45 - 2:20 | SLC | Mrs Catherine Grimwade, Miss Ann McAllen and Mr Andrew Schneider |
| | MAY 20 JUN 17 | Master Art Class | Year F-2 | 1:40 - 2:20 | 1B | Penny Townley with Miss Jess McGeachin |
| | MAY 6 MAY 13 MAY 20 MAY 27 JUNE 3 JUNE 10 JUNE 17 | Indoor Soccer | Year 2 - 6 | 1:35 - 2:00 (One year level per week which will be announced) | Hall | Mr Scott Chahwell |

Community Collection
For 'Mummies Supporting Families in Need'
15-21 May 2016



During National Families Week, the Aspendale Gardens Community Service will be collecting children's clothing (size 3+), non-perishable food items, pyjamas, nappies and toiletries for local charity 'Mummies Supporting Families in Need'



If you can donate any of the above items, please drop them into the Centre during National Families Week.

Aspendale Gardens Community Service
103-105 Rawney Drive, Aspendale Gardens 3195
9587 9955 | www.aspcg.org.au | info@aspcg.org.au

National Families Week
10-11 May 2016



City of KINGSTON

Before and After School Programs

Epic fun and friendships!



How to enrol:

1. Visit our website kingston.vic.gov.au/beforeandafterschoolprograms
2. Create an account through My Family Lounge
3. Enter your child and select required days
4. Your child joins in the app (due at the program)


Contact us
9581 4817 | info@kingston.vic.gov.au

Infinity
Nails & Beauty Salon



138 Station Street Aspendale
(03) 9588 1503
info@infinitynailsandbeautysalon.com.au
www.infinitynailsandbeautysalon.com.au

EDITHVALE PRIMARY SCHOOL—CALENDAR—TERM 2, 2016

| | Week 1 11-15 Apr | Week 2 18-22 Apr | Week 3 25-29 Apr | Week 4 2-6 May | Week 5 9-13 May | Week 6 16-20 May | Week 7 23-27 May | Week 8 30 May-3 Jun | Week 9 6-10 Jun | Week 10 13-17 Jun | Week 11 20-24 Jun |
|-----------|---------------------|---------------------|--------------------------|--|--|---|--|---------------------------------------|--|--|--|
| MONDAY | Term 2 Starts | Junior Mayor | Anzac Day No Students | | | Education Week Professor Maths | | | | Queen's Birthday No Students | |
| TUESDAY | | School Council | | | Naplan School Council | Professor Maths Foundation 2017 Open Learning Session 9.30-10.30am | | Year 4 Camp | | School Council | |
| WEDNESDAY | | | | | Naplan | | | Year 4 Camp | Coach Approach | Year 2 Wetlands Excursion | |
| THURSDAY | | | | Mothers Day Stall  | Naplan | Foundation 2017 Open Learning Session 9.30-10.30am | Moonlit Sanctuary Excursion Foundation Family Life Year 5-6 | Year 4 Camp | | | |
| FRIDAY | | | | Mothers Day Breakfast Interschool sport Year 6 @ Seaford | Interschool sport Year 6 @ Chelsea | | Curriculum Day No students required at school | Interschool sport Year 6 @ Home | Interschool sport Year 6 @ Seaford | | Last day of Term 2 Assembly 2pm Early finish 2.30pm |
| WEEKEND | | | Bunnings BBQ | Mother's Day | | | | | | | |