



# EDITHVALE PRIMARY SCHOOL

FORTNIGHTLY NEWSLETTER

Edithvale Road, Edithvale, Victoria 3196  
Phone: (03) 9772 1393 Fax: (03) 9772 7307  
Web: [www.edithvaleps.vic.edu.au](http://www.edithvaleps.vic.edu.au)  
Email: [edithvale.ps@edumail.vic.gov.au](mailto:edithvale.ps@edumail.vic.gov.au)

Term 2—Week 3

9 May 2014

Doing the Right Thing, Working Together & Aspiring Higher

## PRINCIPAL'S REPORT

Mrs Denise Webster

Students in Years 3 and 5 will once again be participating in Naplan (National Assessment Program - Literacy and Numeracy). This will be held during next week on Tuesday, Wednesday and Thursday. The results of the tests are of great benefit as they provide information for students, parents and teachers which can be used to improve student achievement.

The Attitudes to School Survey was conducted last week and involved students in years 5 and 6. It is a short questionnaire which enables the students to give their view on school in general, their experience in the classroom, with the teachers and with other students. The information is valuable to us so that we can plan activities and programs for students and continue to improve the school.

Education Week begins at EPS on Monday 19 May. Tours for 2015 Prep students and their parents will be held on Tuesday 20 May and Thursday 22 May at 9.15am. Students from the local kindergarten will visit on Monday and Friday to see our current Preps at work. On Monday evening there will be a Maths Open Night and many exciting activities are planned to engage students and parents in the world of mathematics. Also, the SRC leaders and the Flinders House Captains have planned a special event with a range of activities to be held on Wednesday 21 May.

Thank you to the wonderful helpers who wrapped and then sold gifts for the Mother's Day stall this year. The children love to shop for that very special gift and we hope that every mum has a perfect day on Sunday.

On Friday 30 May there will be a curriculum day for teachers focusing on assessment, moderation and reporting. Students will not be required at school for this day.

## OHS at EPS

Mr James Whitla

As part of the Department of Education and Early Childhood Development's Health and Safety Management Plan, new labelling will be installed at our school.

The labels remind people to contact school reception prior to undertaking any works at the school, to ensure

they have up-to-date information from the school's asbestos register.

Asbestos - which was used extensively in building materials in the past but is now banned - is considered safe unless damaged or in poor condition. Our regular checks for asbestos help to ensure that we continue to provide a safe working environment for all members of the Edithvale Primary School community.

The new labels form part of a comprehensive program to ensure Victorian government schools remain safe and as children's safety is our number one priority, this is why we are adding in this extra precautionary step.

As part of the Department's Occupational Health and Safety Management System and to fulfil obligations with WorkSafe Victoria, the Department has been, and is currently undertaking an asbestos labelling program in Victorian schools over the coming years.

Labelling of approximately 300 schools by the end of this financial year will be undertaken by Department representatives. These labels will be placed at the entrances to buildings with known asbestos containing material and also the entrance to the school's reception area, to remind people to contact reception prior to undertaking any works at the school.

## EMERGENCY EVACUATION DRILL



Next week we will be conducting an ONSITE EMERGENCY EVACUATION DRILL for every class in our school.

Emergency procedure drills will be held randomly throughout the year and next week's practice is designed to support our students to become accustomed to moving in a safe, calm and orderly fashion to designated safety points throughout the school.

Staff will explain the expectations and requirements of our students step by step and expose them to the sounds of the alarm and loud speakers. This familiarisation will help prepare our students for any future emergency drills

All parents on the school premises at the time of the evacuation will be asked to join in this emergency procedure too, which will only take 5-10 minutes.



## SCHOOL FEES & CHARGES

### Sandie Wishart—Business Manager

The second instalment of Fees and Charges was due on 28 April 2014 and has now been actioned. If you elected to pay your instalment by cheque or BPay, would you please do so now. And, if you have updated your credit card and have a new number or expiry date, please remember to let us know.

It is great to see so many people using BPay. This is our preferred method of payment, however, please try to make your payments for \$20 or more, as we incur fees for each transaction (you may incur a fee as well) and it is not so cost effective for small amounts of money. Please note also, that when you make a payment, you need to email me or send a note along to school, so I know what to allocate your money to.

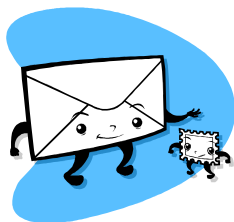
[edithvale.ps@edumail.vic.gov.au](mailto:edithvale.ps@edumail.vic.gov.au)

You don't need to make 2 or 3 separate payments for your various charges, you can combine them all in one.

## PAYMENT ENVELOPES

If you would like some School Payment Envelopes, they are available from the office.

Just drop by and collect a few next time you are up at the School.



## STAFF CARPARK

For the safety of students and parents, we ask that parents park in the street and use other entrances.

*The carpark is for staff use only.*



## CANTEEN

### Mrs Diane Cameron

As the term progresses the days are becoming a little colder. Why not order a Hot Chocolate (\$1.00) or Fantastic Noodles (\$2.30) with your lunch order. Also Available at recess for window sales only, Vegemite or Butter Toast (.40c).

For those, whose palate needs an extra chill, we have in stock Paddle Pops (\$1.20), Mini Callipos (.80c) or a little Tub of Ice-Cream (\$1.00).

Remember to include .10c for a bag and .20c for Tomato Sauce.

Thanks to all my special helpers for the last fortnight, a fine effort.

## CANTEEN ROSTER—TERM TWO

Mon 12	Tue 13	Thu 15	Fri 16
Anna Ericcson	Kate Gibbon	Debbie Bond	Bernadette Lydster Nicole Butcher
Mon 19	Tue 20	Thu 22	Fri 23
Kerrie Mussert	Becky Evangelista	Antoinette Butta	Rachel Cox Holly Smith

## SECOND HAND UNIFORM SHOP

Many thanks to those who continue to donate good quality, saleable items for the Second-hand Uniform Shop. Unfortunately we are receiving quite a lot of items which are ripped, stained and dirty - these items are not up to the standard we would feel comfortable asking money for. We ask that you please check over any items before you donate and PSW items are preferred.

Now the weather is turning cooler there are many windcheaters and a limited number of tracksuit pants and jackets in sizes 4-10. We do have a very small number of polos, skorts, shorts and tracksuit pants in sizes 12-14 and several school bags.

Please note our opening time of Tuesday 3:00 pm to 3:30 pm in the School Hall. There are no EFTPOS facilities and please bring small notes or coins, as we cannot change larger notes.





## PREMIERS READING CHALLENGE

Kerry Mitvalsky

The Premier's Reading Challenge is celebrating its 10th Anniversary this year so our aim is to have **every** student participate. A consent form will be sent home with every student today. Please complete it and return to your child's classroom teacher and you will then receive a form to record the books your child has read.

For Years Prep to 2, students will need to read 30 books (20 from the Premiers Reading Challenge List) and for students in Years 3 to 6, 15 books (10 from the Premiers Reading Challenge List). Students will be able to borrow books from our library during their library lesson, but if you wish to change the book prior to their next lesson, the library will be open on Wednesday mornings between 8.30 am and 8.55 am.

If you have any queries, please don't hesitate to ask Mrs Hayes or Mrs M.



## WRITERS CORNER



Is your writing being displayed at the moment? The Writers Corner is now open, so head over and take a look!

We are currently displaying the great writing Edithvale Primary is producing in the Year 4 end of the Learning Centre.

Pencil dude has a new partner over there who he'd like you to meet!

## ENTERTAINMENT BOOKS

We are promoting Entertainment Books for purchase again this year. Books were sent home to all Prep families, but the older year levels were only given order forms.

If you have received a book, please either send your payment or the unwanted book back to school as soon as you can. If you wish to purchase more than one book, please see Sandie or Pru in the office.

If you received an order form and wish to purchase one or more books, please send your order form and payment back to school and the book/s will be sent home. Thank you.

# Maths Corner

### Everyday maths tip!

Using a deck of cards, turn over 2 cards and:

- ~ add the 2 numbers
- ~ subtract the smallest from the largest number
- ~ multiply the 2 numbers
- ~ divide the largest number by the smallest number (where possible)

**\*\*Make it harder by turning over more than 2 cards.**

Play with a partner or by yourself (time yourself and see if you can get quicker and beat your time).



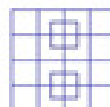
### Puzzle of the Week!

In my pocket I have \$2.35.

What coins might I have?

List as many different combinations as you can.

### Last week's puzzle solution:



There are 40 squares in this picture.





## ASPENDALE GARDENS COMMUNITY SERVICE INC.

103-105 Kearney Drive  
ASPENDALE GARDENS VIC 3195  
Tel: (03) **9587 5955** Fax: (03) 9587 5280  
Email: [enquiries@agcsinc.org.au](mailto:enquiries@agcsinc.org.au)  
Website: <http://www.agcsinc.org.au>  
ABN 45971536394

### Playgroup

Playgroup is a wonderful experience for children and a chance for parents/carers to meet other people going through similar experiences in a warm, friendly and informal setting.



#### Times:

10.15am - 11.45am every Monday  
9.30am - 11.30am every Wednesday & Thursday

Cost: \$55.00 per term

Bookings are essential and can be made by contacting our office.

### Hall Hire



Looking for a venue for your next party, function or seminar that is close to home? Located in a parkland setting, our Centre has a warm and friendly atmosphere with a range of rooms available and lots of off street parking. We can offer a carpeted room which opens up to a fenced off outdoor area and is perfect for a function of up to 100 people. Our large multi-purpose hall (with stage) can be hired for larger functions or indoor sporting events. Both rooms have access to an industrial kitchen. A BBQ is also available for hire by request.



For further information on our services see our website [www.agcsinc.org.au](http://www.agcsinc.org.au), call us on 9587 5955 or



## GOOD FRIDAY APPEAL

Our Hospital Dress-Up Day, on Thursday 27 March was a huge success, raising \$413.90 for the Good Friday Appeal. This money, together with the donation envelopes, brought our grand total to an amazing **\$1094.50**. Thank you again to all the students and their families and staff members who donated. The tax receipts will be distributed as soon as they arrive.



## HELP US RAISE MONEY TO FIGHT POVERTY!

James, Hayley P, Eboni, Ella C & Daisie  
SRC Leaders & Flinders House Captains

Last Friday, Miss Goudey walked 100kms through the Dandenong Ranges to raise money for OXFAM Australia. Our school is helping her team raise money for people living in poverty all around the world. We will be holding an OBSTACLE COURSE CHALLENGE and DRESS UP DAY on **Wednesday 21 May**.



Please dress up in your walking/hiking gear, bring a **\$2 donation** and be ready to help your class complete the obstacle course in the fastest time! There will be a prize for the winning class.

On this day, we will also be hosting 'Walk Safely to School Day' where everyone will be encouraged to walk to school instead of driving. We will be sending home more information about this day soon.



## MORDIALLOC NEIGHBOURHOOD HOUSE

Searching for a creative outlet?

Why not join our art class?

### ART FOR PLEASURE

A class to suit all skill levels.

**WEDNESDAY: 9.30-11.30am**

For enrolments & further information,

please phone 9587 4534

## MOTHERS DAY STALL PFA—Helen Arden

I would like to send out a **BIG** thanks to all our wonderful volunteers who helped organise this years Mother's Day Stall—from wrapping over 300 gifts to making sure the stall ran smoothly.

I would also like to thank those who worked "behind the scenes" to make sure the stall was as successful as it was. We hope all Mums out there enjoy their gifts and have a lovely day on Sunday.





**CHELSEA BASEBALL CLUB JUNIORS**

CHELSEA BASEBALL CLUB  
BERT THOMAS PAVILION  
EDITHVALE ROAD, EDITHVALE

FOR MORE INFORMATION  
CALL TREVOR JOHANSEN 0450 784 728



**CHELSEA ARCADE MEDICAL**

HEALTH GROUP

**OPEN NOW**

Monday - Friday 8:00am to 6:00pm  
Saturday 9:00am - 1:00pm

**Bulk Billing**

**FLU VACCINE AVAILABLE NOW**

Shop 10 & 11, 426 Nepean Highway  
**CHELSEA | 9772 9878**  
[www.camedical.com.au](http://www.camedical.com.au)




**CHAMPIONS ARE MADE, NOT BORN.**

**TERM 2** | Providing your child the opportunity to learn the skills of football...

**Weekly Clinics – Skills Acquisition Program**

**MOORABBIN**

	TUESDAYS	SATURDAYS	SUNDAYS
Goalkeeper Training	5pm - 6pm <b>8 - 11 yo</b>	9am - 10am <b>5 - 7 yo</b> 10am - 11am <b>8 - 9 yo</b> 11am - 12pm <b>10 - 12 yo</b>	9am - 10am <b>5 - 7 yo</b> 10am - 11am <b>8 - 9 yo</b> 11am - 12pm <b>10 - 12 yo</b>

**THURSDAYS**  
Goalkeeper Training  
5pm - 6pm **12 - 16 yo**

**LOCATION:** FSA Centre of Excellence, 1 Lennox St, Moorabbin


**TO SIGN UP** PLEASE VISIT: [footballstaracademy.com.au](http://footballstaracademy.com.au)

**ELITE SQUAD TRAINING**  
Mondays / Wednesdays  
6.30pm - 8pm **12 - 16 yo**

**SCHOOL HOLIDAY CAMP**  
Monday - Friday  
9am - 12pm **5 - 7 yo**  
9am - 3pm **8 - 12 yo**

**FREE TRIAL**  
call 1300 372 300

**PROGRAM ENDORSED by JESPER OLSEN** former Manchester United, Denmark World Cup player and Melbourne Heart Assistant Coach.



**Junior Membership**

**Stage One**

Welcome Pack  
45 Minute Beginner Clinics - Tuesdays & Sundays  
Club Hire  
20% discount off school holiday programs  
Invitation to end of term party  
**Cost \$40.00 per term**

**Stage Two**

One hour clinic - Thursdays  
- On Course Mentoring  
- Course Etiquette  
- Game Knowledge  
Two half hour private lessons per month  
Club Hire  
20% discount off school holiday programs  
Invitation to end of term party  
**Cost \$70.00 per term**

**Stage Three**

12 month Membership  
Access to course everyday after 3:30pm  
Access to clubhouse and practice facilities  
Obtain a handicap  
Thursday clinics  
Two half hour private lessons per month  
20% discount off school holiday programs  
\*under approved adult supervision  
**Cost \$280.00 per year**

**Junior 12 - 20 years**

Entrance into Junior Membership  
Cost as per Membership Subscriptions  
Full Membership rights  
Complimentary  
- Private Lessons  
- Range Balls  
- Buggy Hire

**Sub Junior 11 years and under**

Bendigo Bank Junior Development Academy  
Dingy Vango Community Bank\* Branch: Bendigo Bank

Bendigo Bank



# Develop the confidence of a winning smile

Take advantage of our **free initial visit** and get some professional advice from a specialist orthodontist today. **No referral is necessary.**



**straight** orthodontics  
health | harmony | confidence

45 balcombe rd, mentone 9585 8000 [straightorthodontics.com.au](http://straightorthodontics.com.au)



Gentle and Caring Services

Children's Dental Therapist

General, Cosmetic  
& Implant Dentistry

Exams for children under 4 free

**9590 9120**

[www.dentalharmony.com.au](http://www.dentalharmony.com.au)

286 Wells Road,  
Aspendale Gardens



dental harmony

17SPV042831F/M/09



**Learn to swim like a fish**

**Free introductory lesson**

**PHONE NOW 9558 0666**

We're located at Goodlife, cnr of Centre Dandenong & Tootal Rds  
**[www.kingswim.com.au](http://www.kingswim.com.au)**



## Parent Support group



To help our kids with learning differences.  
Dyslexia, dyscalculia, dysgraphia etc

**The Fourth R? Resilience**



Andrew Bridge was instrumental in introducing 'Resilience' into his school, Wedge Park.

Admission free

Bookings essential from  
[awillia@deakin.edu.au](mailto:awillia@deakin.edu.au)

PD certificates issued on request

'Resilience is major factor of wellbeing'  
Prof Martin Seligman

Weds May 14,  
21 Bay Rd.,  
Sandringham  
7pm-9pm

BEYOND  
THE  
SCHOOL  
GATES

Kids Like Us Australia Ltd is a registered charity and does not receive any government funding

Kids Like Us  
funding



**House of HEALTH AND FITNESS**

*First Session FREE*

Come and try a Group session at  
Edithvale Recreational Reserve in Edithvale.

- Group Fitness
- Personal Training
- Box Fit
- Core strength
- 12-week Challenges
- Strength, Cardio, Endurance

**To book your FREE SESSION call Kim on 0423 487 398**

**[WWW.HOUSEOFHEALTHANDFITNESS.COM.AU](http://WWW.HOUSEOFHEALTHANDFITNESS.COM.AU)**

Edithvale Physiotherapy

**Tried everything? Try us!**

Physiotherapy • Massage • Myotherapy • Pilates



**Tel (03) 9772 3322**

285 Nepean Hwy, Edithvale [psmgroupp.com.au](http://psmgroupp.com.au)

EDITHVALE  
PHYSIOTHERAPY  
CLINIC

## TERM TWO—EPS EXTRA CURRICULAR ACTIVITIES CALENDAR

WEEK	DAY	Extracurricular Activity	Who	When	Where
4-9	Monday	SRC	All Year levels	1:35 - 2:00	Prep A
		Environment Club	All Year levels	1:35- 2:00 Wks 3, 5, 7, 9	Learning Centre
		French Poetry	Year 3 - 6	1:35 - 2:00	3B
	Tuesday	Dance Club	Yr Prep- 1	1:35- 2:00	Learning Centre
		Cartoon Club	Yr Prep-3	1:35 - 2:00	1A
	Wednesday	Cheerleading	Yr 3-6	1:35 - 2:30	Hall
		French Poetry	Yr 3-6	1:35 - 2:00	3B
		Choir	Year Prep - 6	2:00 - 2:30	Learning Centre
	Thursday	Craft Club	Yr Prep-2	1:35 - 2:00	1B Room
		Art Room	All Year levels	1:45- 2:15	Art Room
	Friday	Library	All Year levels	1:40 - 2:00	Library
		Hip Hop	Yr 4-6	1:40- 2:30	Gallery
		Computers/ iPads	Yr 3-4	1:40 - 2:00	Library
		French Poetry	Yr 3-6	1:35- 2:00	3B
10	LAST WEEK OF SCHOOL	NO EXTRACURRICULAR ACTIVITIES			

### Environment

Are you ready to get your hands dirty? Come and do some gardening with us, let's continue to make our school beautiful!

### SRC

The Student Representative Council meets once a week to discuss events and activities for the whole school. We are currently preparing fun activities and fundraisers for this term.

### Cheer/Stunt

The EPS Cheer and Stunt have started training for our first competition which is coming up very soon. Wish us luck!

### Hip Hop

The EPS Hip Hop Team will be holding tryouts early this term. We are ready to groove and move to the beat. We're so excited to start training for this September!

### Library

Let your imagination take you to magical places, come and open your mind to fantasy, fiction and suspense at the library!

### Computers/ iPads

Have a go at playing some games and learning new ICT skills! Explore fun activities on our new iPads.

### Cartoon Club

Get your pencils and drawing skills out; it's time to create cheerful, cheeky, charming and eye-catching cartoon characters!

### Craft Club

Do you love cutting, gluing, sticking, drawing, tracing and creating works of art? Then this is the activity for you!

### Choir

Choir is back! We will be practising our singing and exercising our vocal chords to present yet another medley of songs for the end of term. Come and sing with us!

### Dance Club

If you feel like moving, groovin' and jivin' to the beat, come and have a dance with us!

### French Poetry Competition

EPS is participating in the French Poetry Competition once again! Good luck to all our participants.

## EDITHVALE PRIMARY SCHOOL—CALENDAR—TERM 2, 2014

[illegible]