



EDITHVALE PRIMARY SCHOOL

FORTNIGHTLY NEWSLETTER

Edithvale Road, Edithvale, Victoria 3196
Phone: (03) 9772 1393 Fax: (03) 9772 7307
Web: www.edithvaleps.vic.edu.au
Email: edithvale.ps@edumail.vic.gov.au

Term 1—Week 7 - 15 March 2013

Doing the Right Thing, Working Together & Aspiring Higher

PRINCIPAL'S REPORT

Denise Webster

It is always surprising to get to this stage of the term and realise that there are only a couple of weeks left before the holidays. Students are well settled into the routine of working in their new classes and there are lots of wonderful learning activities happening across all areas of the school. Many of these are talked about on Friday afternoons when students from different levels coordinate the assembly. We are delighted that so many parents join us as we celebrate the week's work.

Once again interim reports will be sent home in the last week of term -these are a snapshot of your child's progress in terms of 'skills and attitude to work'. They are not a report on achievement level - this will be given in the mid-year reports. If you have any concerns or wish to discuss your child's progress in more detail please contact the classroom teacher to arrange a time to meet.

This year our school is going through a process of self-evaluation and review. This process provides an opportunity for our school community to reflect on our achievements, our strengths, and areas where improvement is needed. The self-evaluation and the review provide a powerful information base from which we can develop our new strategic directions for the four-year school strategic plan. We will:

- review the school's core purpose and values;
- take a 'futures perspective' of the needs of children and young people and the context of our school;
- agree on the outcomes we are striving to achieve for our students;
- select the few most important strategies that are critical to our success.

The strategic plan will reflect the community's

expectations and the Government's priorities for education and early childhood development. It will be a strategy that is critical to our school's continued success - improving learning, engagement and wellbeing and successful transitions and pathways for our children and young people. We look forward to working with students, staff and other members of the school community to ensure that all viewpoints are represented.

Our next newsletter will be issued on Wednesday 27 March and students will be dismissed from school at 2.30 pm on Thursday 28 March after the final assembly for the term, which will start at 2.10 pm.

FIRE DRILL

In the next few weeks we will be conducting an emergency evacuation drill. This practice builds upon the fire drills that we have previously conducted and requires us to be off the school grounds for a short period of time. Students and staff will go through this process to ensure that, should there ever be an emergency, we can be confident that all will be safe. All of our school community did a great job during our last fire drill and all involved are to be congratulated on the manner in which they coped.

IMPORTANT SAFETY NOTICE

The safety of our students and their families is of utmost importance. Drop off and pick up times are now of great concern to the school community and our neighbours, because some parents are not observing the parking restrictions that are in place.

Haig Avenue and French Avenue are particularly congested and we ask that everyone assists in ensuring that our children are safe when going to and from school. Thank you.



YOUNG LEADERS DAY James Whitla

On March 1st I had the privilege of taking our school leaders to the National Young Leaders Day at the Melbourne Convention Centre.

Over 5,000 students from throughout Victoria attended this day which aims to build on students' leadership capacities and skills. **Camille Nightingale, Liam Canavan, William Hampson and Amy Tomlinson** heard inspiring stories from scientists, sport stars and entrepreneurs in the hope of creating the next generation of great leaders.

It was a fantastic day and it was terrific to see and hear all four students fired with enthusiasm.

CANTEEN Mrs Diane Cameron

After 12 years working/volunteering in the Canteen the time has come to ask for some more parent volunteers to help out.

At the moment I have enough helpers for Monday & Tuesday (but I won't say no to those who can only do those days). Thursday & Friday is where I need help, even if it is for 2 or more hours.

Call into the Canteen if you can help.

Thanks to my helpers for the last fortnight, another big 2 weeks with Icy Poles & Sippah Straws a big hit

CANTEEN ROSTER—TERM ONE

Mon 18th	Tue 19th	Thu 21st	Fri 22nd
Anna Ericsson	Becky Evangelista	Debbie Bond	Kellie Kingsley
Mon 25th	Tue 26th	Thu 28th	Fri 29th
Shauna McMillan	Sharyn McIntosh	Antoinetta Butta & Michelle Lothian	Good Friday Holiday

BRINGING VALUABLES TO SCHOOL

Just a reminder that items of value should not be brought to school and that neither the Department, nor the School, provide insurance for these items. This includes mobile phones, iPads, iPods, and other portable music devices. It is best to leave these things at home.

FRENCH POETRY COMPETITION at EPS



WHAT IS IT?

The Berthe Mouchette Competition is an opportunity for students to practice the French language by participating in a competition with great prizes to be won! There are two categories, oral and an additional "nouveau" a Drawing Competition for the Primary level participants.

- ♦ Years 3-6 recital of a French poem
- ♦ Entry fee - \$ 5.50

THE PRIZES

All participants receive a certificate and prizes are awarded to the 1st, 2nd and 3rd place winners of each year level.

Prizes include beautiful French books, encyclopaedias, CDs, DVDs and
Le Prix La Pérouse - a cultural trip to New Caledonia (Year 11 winner)
Le Prix AFX Student Exchange - a 5 week exchange trip to France (Year 12 winner).

WHO CAN ENTER?

The competition is open to all students from Year 3 to Year 12 in all schools across Melbourne and Victoria. Even students from non-participating schools and home schooled students may enter as independent candidates.

HOW CAN I ENTER?

Please contact: Madame Snow at EPS.

STUDENT PHOTOS

REMINDER: Student school photos are being taken on **Thursday 21 March.**

Orders can be placed online or via the envelopes sent home with your child. Envelopes should be returned to school prior to photo day.



WORKING WITH CHILDREN CARDS

It is now five years since Working With Children cards were first issued. That means, a lot of people holding cards, will be due to renew them. If you do any work at the school and have recently renewed your card, would you please bring it to the office so we can take a copy (or send a copy to school with your child). Alternatively, you can log on to the WWC website and update your volunteering location, to say Edithvale Primary School, and I will automatically be sent a copy of your card.

It is a legal requirement that we have these cards on file for any parents helping out around the school.

2ND HAND UNIFORM SHOP Rachel & Melinda

The Second Hand Uniform Shop is open every Tuesday from 3:00 pm to 3:30 pm and is located in the School Hall. We currently have a great range of items in stock from sizes 4-12 and all are in good, clean condition. Prices begin at \$2 for polo tops, shorts, windcheaters, skorts etc; so come and have a look and save yourself some money.

EPS MEMORABILIA

With our Centenary Celebrations coming up this year, we are seeking Edithvale Primary School memorabilia such as photos, letters, old school newsletters etc;

If you have anything we could have (or borrow), please bring it up to the school at your earliest convenience.

Watch out in our future newsletters and on our website [www.edithvaleps.vic.edu.au] for details of our celebration activities.

PAYMENT ENVELOPES

If you would like a few 'payment envelopes' for sending money to school, you can collect them from the school office. Otherwise, you can use any envelope, just ensure you include your child's name, class, the name of the excursion and how much is enclosed, on the front of the envelope. Thank you.

STAFF CARPARK



We have noticed a number of people have been entering the school grounds via the staff carpark. For the safety of students and parents, we ask that parents park in the street and use other entrances. ***The carpark is for staff use only.***

STUDENT ACCIDENT INSURANCE

A reminder that neither the School or the Department provide personal accident insurance for students. Parents/Guardians are responsible for paying the cost of medical treatment for injured students, including any transport costs. Student accident insurance policies are available from some commercial insurers.

RELIGIOUS EDUCATION CLASSES

The package of permission forms that went home recently included a permission form for RE for Years 1–4 only. Prep and Year 5 & 6 do not participate in Religious Education classes, therefore the blue RE form was not included in their packs.

If you have not sent your forms back yet, please do so at your earliest convenience—we need to have our records up to date as soon as possible.

ART ROOM Ms Jenny Lang

We are looking for recyclable materials for the art room. If you can help us out with any of the following items we would be most appreciative.

- ◆ telephone books (yellow and white)
- ◆ tubes
- ◆ yoghurt containers (small)
- ◆ meat trays (foam)
- ◆ egg cartons
- ◆ boxes (only as large as a cereal box)



All items can be left at the Art room.

Thank you.

UNIFORM SHOP

The Uniform Shop opening hours have been changed slightly, to **3.00 pm–4.00 pm**, still on a Tuesday afternoon.

THE BIG LITTLE G PROJECT!!!

Max Telfer & Mark Deacon Grade 3

WHAT IT IS ABOUT!!!

The aim is to measure the local acceleration due to gravity, using a pendulum.

As objects fall towards the ground, they speed up. The more gravity there is the faster they go.

We are sending our results in to the biggest gravity map in the world.

WHAT WE DID!!!

We cut a bit of fishing line 75cm long. We tied 2 washers to the end of the line. We set up a tripod and blu-tacked the end of the line to the tripod.

Then we measured the pendulum.

Next Mark pulled the pendulum and Max timed the pendulum swing 10 times.

We did this 10 times.

Now Max pulled it and Mark timed it.

Then we had to calculate our results using the formula $g = \frac{4\pi^2 l}{T^2}$



City of Kingston Vacation Care Program

Program Dates: Tue 2 April–Fri 12 April 2013

Enrolments Start: Monday 4 March

Close: Friday 22 March 2013

It is requested children who require support for inclusion in a program, submit enrolment and payment forms as early as possible to allow time to apply for funding. Vacation Care Brochure's are now available at the School Office or can be downloaded from Kingston's website www.kingston.vic.gov.au For enquiries please call the Vacation Care Team on (03) 9581 4846 or (03) 9581 4875.

BEING SUN SMART

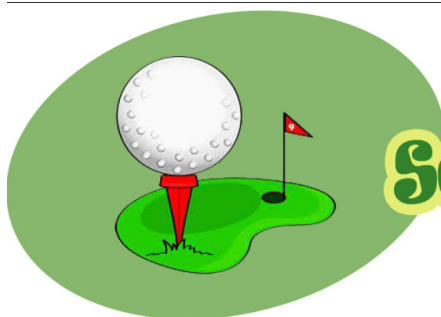
Simir Dhawan - 2B



In summer, people enjoy going to the beach, playing different water games and watching cricket. We must never forget to apply sunscreen lotion before going out in the sun, as the sun's rays can be very harmful for our skins. The hot rays of the sun can damage our skin. Tanning and sunburn can lead to skin problems.

Never look directly at the sun. We should always wear sunglasses to protect our eyes. Slipping into clothes that cover most parts of our body is very helpful. Everyone should wear a hat that can cover eyes, face and neck.

In summer we must drink lots of water. Small children should play in the shade. When travelling in cars, always have window shades on. It is not difficult to be "Sun Smart".



School Holiday Golf Clinics

conducted by Paul Boxall
Golfvic/ PGA Teaching Professional

All equipment supplied Bookings are Essential
(please byo food & drink)

Dates :-

Tuesday April 2nd Thursday April 4th

Tuesday April 9th Wednesday April 10th

Thursday April 11th

1/2 day (09.00am - 12.00pm) \$40

Full day (09.00am - 3.30pm) \$70

PATTERSON RIVER GOLF CLUB

The Fairway

BONBEACH 3196

Tel Proshop: 9772 1972

ASPENDALE GARDENS COMMUNITY CENTRE NEWS

PH: 9587 5955 FAX: 9587 5280

EMAIL: agcsinc@bigpond.net.au

Aspendale Gardens Community Centre have a number of activities for the young and young at heart. For information on what we have to offer, check out our website www.agcsinc.org.au or pop into the community centre for a copy of our brochure.

Our office hours are 9.30am-3pm Tuesday to Fridays. Ph. 9587 5955

COMEDY NIGHT- A night with Marney McQueen. Saturday 23rd March (7.30 for an 8pm show). Marney has received excellent reviews from stars including Jackie Weaver, Barry Humphries as well as Edinburgh and Australian comedy festivals. Come along and enjoy a night of hilarity and support your community centre with our major fundraiser for the year. Tickets only \$35 for single or \$30 per person if you book a table of ten. Tickets available on our website www.agcsinc.org.au. Enquiries ph. 9587 5955.

Occasional Care- now twice a week. Tuesdays 8.30am-11.30am and Fridays 12.15-3.15pm. Take a break and let our qualified child care staff look after your little ones at a very affordable price. Only \$15 per session or \$25 per family (AGCS members) Bookings can be taken one week in advance or you can book a permanent spot (term by term basis) SPACES ARE LIMITED. Enquiries ph. 9587 5955.



ASPENDALE STINGRAYS SOCCER CLUB

THE ASPENDALE STINGRAYS ARE URGENTLY
LOOKING FOR JUNIOR SOCCER PLAYERS FOR THE
UPCOMING 2013 SEASON

PLAYERS ARE REQUIRED FOR THE FOLLOWING

U9'S MIXED (BOYS AND GIRLS, BORN 2004/2005)

AND THE GOAL KICK SKILLS PROGRAM WHICH IS FOR
BOYS AND GIRLS BORN FROM 2006 TO 2008

For more information please go to the Club's website

www.aspendalesc.com

or contact the Club's Registrar via email on

registrar@aspendalesc.com

JOIN ONE OF MELBOURNE'S MOST FAMILY FRIENDLY
SOCCER CLUBS

LOST PROPERTY



Lost property is stored outside the LOTE room. Madame Snow will place the lost property bin outside her room during school hours.

Please look through it for any lost items. Small, valuable items will be held at the office. Named items will be returned to students ASAP.

EMA

Anyone who elected to have their EMA paid by cheque can call in to the office to pick it up as the cheques have now arrived.



For those that chose direct payment, this should now be in your bank account.

If you nominated to have EMA paid to the school, this has been credited to your account and is ready to be allocated to your outstanding charges.

Develop the confidence of a winning smile

Take advantage of our **free initial visit** and get some professional advice from a specialist orthodontist today. **No referral is necessary.**



straight orthodontics
health | harmony | confidence

45 balcombe rd, mentone 9585 8000 straightorthodontics.com.au



DISABILITY Respite & Recreation EXPO 2013

**FOR PARENTS AND CARERS
LIVING IN THE SOUTH DIVISION**

Find out more about opportunities for people with a disability

- Respite Options
- Recreation & Arts Info
- A Large Variety of Stalls

Tuesday 23rd April
10am - 2pm

Phoenix Park Community Centre
22 Rob Roy Road
Malvern East
MELWAYS REF: G8 D2
FREE EVENT

For more information contact the MOIRA Expo Coordinator:
Ph (03) 8552 2222 Email: respitexpo@moira.org.au

 Interpreters available on request

Proudly Supported by







SATURDAY 23RD MARCH 10AM-4PM

KIDS' SPECTACULAR

**THOMAS
THE TANK
ENGINE**

**PAMPER
PALACE**

**RIDES &
GAMES**

**FOOD &
DRINKS**

**FABULOUS
ENTERTAINMENT
& STALLS!**

MENTONE PARK PRIMARY SCHOOL

LOTS OF FUN FOR THE WHOLE FAMILY!

BROOME AVENUE MENTONE



Gentle and Caring Services

Children's Dental Therapist

**General, Cosmetic
& Implant Dentistry**

Exams for children under 4 free

9590 9120

www.dentalharmony.com.au

286 Wells Road,
Aspendale Gardens



dental harmony

17SPAD0108181FMM09

Edithvale Physiotherapy

Tried everything? Try us!

Physiotherapy • Massage • Myotherapy • Pilates




Tel (03) 9772 3322

285 Nepean Hwy, Edithvale psmgroupp.com.au



EDITHVALE
PHYSIOTHERAPY
CLINIC

Le Page Primary School

Presents

LADIES NIGHT—CRAFT MARKET

7.00 pm to 9.00 pm
Thursday, 21st March
In the School Hall
Le Page Primary School
73-77 Argus Street, Cheltenham

Jewellery, Hair Accessories, Soaps, Cards,
Lollies, crafts, knitted goodies, tea towels,
jams, leadlight, massages, raffle and much
more.

Tea/ Coffee and Baked Treats
Don't miss out, it's a great night.

Stall Enquiries:
Rita - 0417 359 344





CHELSEA BASKETBALL STADIUM HOME OF THE MIGHTY GULLS

Winter season starts May 6th 2013

BASKETBALL

**COME ALONG AND ENJOY OUR NEW STADIUM
AND BE PART OF THE NEW ERA**

APPLICATION FORMS AVAILABLE AT CHELSEA STADIUM, BY MAIL OR EMAIL
FORMS MUST BE IN BY 25TH MARCH WITH PAYMENT

SENIOR REGISTRATION	\$160
JUNIOR REGISTRATION	\$140
SENIOR GAME SHEETS	\$45
JUNIOR GAME SHEETS	\$40

**U8, U10, 12, 14, 16, 18, 20 BOYS AND GIRLS,
MENS, WOMENS AND MIXED**



LOCATED AT EEL RACE ROAD NEXT TO PATTERSON RIVER SECONDARY COLLEGE
FOR MORE DETAILS CALL 03 9776 1895 OR EMAIL manager@chelseabasketball.com.au



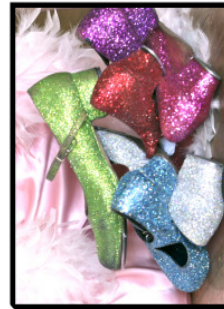
Dancing Open Day!

Saturday 13th April

10am ~ 2 to 3 YRS
11am ~ 3 to 4 YRS
12pm ~ 4 to 5 YRS
1pm ~ 5 to 7 YRS
2pm ~ 8 to 12 YRS
3pm ~ ADULTS

- ~ No Exams
- ~ No Competitions
- ~ No Uniforms

Great fun!
Fantastic for building
confidence, fitness,
coordination &
technique!



Call Miss Brianna 0420 356 232 Bookings essential!

2 Lamana rd, Mordialloc.



mordy@gtwopenday.com
www.glitterytappingwonderland.com



GET ALONG AND HAVE FUN WHILE LEARNING THE

SKILLS OF BASKETBALL

Chelsea Basketball are proud to be able to offer the opportunity for all kids of any age to be coached by some great coaches and Big V players, these players will go through the fundamentals of basketball while also playing games throughout the 3 days!

When:

Tuesday 10th, Wednesday 11th & Thursday 12th April - 10am to 3pm

Where:

Chelsea Basketball Stadium - Cannes Avenue, Bonbeach

Cost:

\$75.00 for 3 days or \$30.00 per day

Closing date for registration is 3rd April

Questions? Call Chelsea Basketball on 9776 1895 or email manager@chelseabasketball.com.au. It is advised that all participants bring their own lunch each day and drink, bottle, snacks and basketball, while there will be a sausage sizzle on the last day which is free.

To register for the Holiday Camp, please fill out the form below and attach and mail to: PO Box 105, Chelsea 3196 or register in person at Chelsea Stadium. You can pay by cash, cheque, Epos or credit card. Please retain the above portion of this form for your personal records.

Full Name	DOB	Gender
Address		
Postcode	Phone Number	
Parents Names	Email	
Current involvement with basketball (circle one) - Never Played At All - Play Domestically - Play Regularly		
Do you take any prescribed drugs? Y.....N.....If yes, for what condition?		
Parents Signature	Date	

MARCH 2013

Mon	Tue	Wed	Thu	Fri	Sat	Sun
				1	2 <i>Bunnings BBQ Keysborough</i>	3
4 <i>Prep Begin Normal Timetable—Full Time This Week</i>	5	6	7	8 <i>Parent Helper Reading Program 9- 11am</i>	9	10
11 <i>Labour Day Holiday</i>	12	13	14	15 <i>Book Club due P.H.Reading Program 9-11 Twilight Working Bee</i>	16	17
18	19 <i>School Council AGM</i>	20	21 <i>Student Photos</i>	22	23	24
25	26 <i>Sushi Day</i>	27	28 <i>Last Day Term 1 School finishes 2.30pm</i>	29 <i>Good Friday</i>	30 <i>Easter Saturday</i>	31 <i>Easter Sunday</i>

APRIL 2013

Mon	Tue	Wed	Thu	Fri	Sat	Sun
1	2	3	4	5	6	7
8	9	10	11	12	13	14
15 <i>Term 2 starts</i>	16	17 <i>Yr 5 & 6 Camp</i>	18 <i>Yr 5 & 6 Camp</i>	19 <i>Yr 5 & 6 Camp</i>	20	21
22	23	24	25	26	27	28
29	30					