



# EDITHVALE PRIMARY SCHOOL

Edithvale Road, Edithvale, Victoria 3196  
Phone: (03) 9772 1393 Fax: (03) 9772 7307  
Web: [www.edithvaleps.vic.edu.au](http://www.edithvaleps.vic.edu.au)  
Email: [edithvale.ps@edumail.vic.gov.au](mailto:edithvale.ps@edumail.vic.gov.au)

Term 2—Week 10

19 June 2015

Doing the Right Thing, Working Together & Aspiring Higher



Download Qkr and register today—the easiest way to make your School payments.

Download tiqbiz and register today—so you don't miss out on important information.



## PRINCIPAL'S REPORT Mrs Denise Webster



Most of you will be aware by now that I will be leaving Edithvale Primary School to take up a new position at the beginning of term 3. As this is my last newsletter, I wanted to let you know once again how proud and privileged I feel to have led the school as Principal over the past seven and a half years. We have fabulous students here and it has been very rewarding to see them grow and thrive as learners. I have worked closely with our wonderful staff and the very supportive parent community and am confident that our school will continue to flourish. I am looking forward to the challenge ahead but, I must say, there is a tinge of sadness as I leave EPS. Thank you for your support over the years; I look forward to hearing of the wonderful **achievements that I'm sure will be part of your future.**

Reports have been distributed today - please **check your child's bag!** Parent-teacher interviews will be held next week on Monday and Tuesday. I would encourage you to take the opportunity to have a conversation with the classroom teacher to discuss the learning progress of your child. If you have any questions or concerns and cannot **make it to the interview session, please don't** hesitate to phone the teacher to organise a more **suitable time.** There is a 'Parent Comment' sheet included in the report - we would love to get your feedback.

The Foundation Transition program for our 2016 students begins on Wednesday, 15 July from 2.30 pm - 3.30 pm. While the children are meeting with the Foundation teachers, parents are welcome to stay and have a cuppa in the staff **room. If you haven't yet enrolled your child, now** is the time to do it so that you can take full advantage of this highly successful program which introduces the children to EPS.

Thank you everyone for your great work over the term - have a happy and relaxing holiday.

School returns on Monday 13 July and Mr Whitla will be Acting Principal for Term 3.

## LAST DAY OF TERM



**Don't forget that term 2 finishes on** Friday 26 June, which is also HOT DOG DAY. Assembly will be held at 2.00 pm and students will be dismissed at 2.30 pm.

## CAMPS, SPORTS & EXCURSIONS FUND (CSEF)

If you are the holder of a current Health Care Card or Pension Card, you may be eligible to claim the CSEF.



Applications for the CSEF should be lodged with the school office before 26 June for payment to be made early in Term 3.

For further information please call Pru in the general office.



## STUDENT BANKING—HELP NEEDED!

We need another parent to help with Student Banking on Wednesday mornings. If you have an hour or so to spare, we would love to hear from you. It just entails opening the banking wallets, filling out and stamping the deposit slips, and entering the banking onto the Student Banking Portal. **You would also be ordering 'rewards' as required using this Portal.** We have a couple of **mums doing this now, but one can't continue due** to other commitments. We would give you all the training you need—and you get invited to a morning tea and receive a small gift at the end of the year. Please give Sandie or Pru a call on 9772 1393, or pop in and see us if you're interested. Thanks.

## WOOLWORTHS EARN & LEARN 2015

Once again, this year we will be participating in the Woolworths Earn & Learn program. Through this program we will be able to get new educational resources for our school/early learning centre - and all we need you to do is shop for your groceries at Woolworths.

From Wednesday 15 July to Tuesday 8 September, we are collecting Woolworths Earn & Learn Stickers. You will get one Woolworths Earn & Learn Sticker for every \$10 spent (excluding liquor, tobacco and gift cards). Place the Woolworths Earn & Learn Sticker onto a Woolworths Earn & Learn Sticker Sheet (*available from the School office*) and when it's complete, the Sticker Sheet can be dropped into the Collection Box here at the school or at your local Woolworths.

**At the end of the promotion, we'll be able to get some great new equipment.** The range is extensive and offers lots of items ideal for our students - including resources for Maths, English, Science and some fantastic fun supplies for Arts & Craft, Sport and for our library. **If you'd like to know more visit [woolworths.com.au/earnandlearn](http://woolworths.com.au/earnandlearn)**

## WE WENT TO THE ZOO, ZOO, ZOO! Ms Jaime Rohan

*Roar! Hiss! Growl!*

Those were some of the noises we heard on 10 June ... and that was before we even got off the bus!

What a wonderful day we had exploring Melbourne Zoo and looking at all of the animal habitats.

The Foundation students loved finding out about new animals and getting to touch a snake!

We were all very tired at the end of the day (especially Harri's dad!) but it was worth it!



## CANTEEN NEWS Mrs Diane Cameron

A reminder that Hot Dog Day is the last day of term....**Yes, we do have a lunchtime!**

**But....there will be NO canteen lunch orders on this day — only Hot Dog orders and window sales.**

A big shout out to parent helpers during Term 2, a big effort. Thank you very much.

There are still some spots available for helpers in Term 3. The Menu for next term will be the same as Term 2.

Have a good rest!

## CANTEEN ROSTER—TERM 2 & 3

Mon 22	Tue 23	Thu 25	Fri 26
Shauna McMillin	Claire Stewart	Monique Dudley	Hot Dog Day
Mon 13	Tue 14	Thu 16	Fri 17
		Monique Dudley	Nicole Butcher

## FRENCH POETRY COMPETITION

### Madame Snow

Edithvale Primary School is a regular participant in the *Berthe Mouchette* Poetry Competition held by the *Alliance Francaise (St Kilda)*. The competition involves learning, memorising and reciting in front of a judge in French and is offered to all our students from Year 3-6. All participants always enjoy the challenge and are proud of their achievements. Even just participating is a testament to their resilience to represent the school and learn a language. Feel free to ask Madame Snow for any enquiries about future competitions.

Here is the list of the students who have been practising and who have attended the oral examination on Wednesday 10 June 2015, a big **"Bravo et Merci" to all!**

Year 3: Emrick BECK, Amelie BULL, Caitlin FORD, William FRASER, Bodea GWYN-AITKEN, Sophie IRONSIDE, Max KEOGH, Noah MARTINE, Declan McCORMACK, Annabella MEECH, Jackson MOULD, Harvey STEWART.

Year 4: Macey AUSTEN, Charlotte BADLEY, Harper BEYER-PLATT, Jessica BRENNAN, Freya BROWN, Eva COULTON, Simir DHAWAN, Jacinta GALLAGHER, Lily GIBBON, Madeline HALL, Lilly HALTON, Matilda HARWOOD, Jessica HAWKER, Alexandra HEENAN, Nadia HENRIQUES, Jye HOLLOWAY, Jessica HOUSE, Emily PRASAD, Zara QUIN, Tia ROBERTS, Jordan SHENOUDA, Matilda SINCLAIR, Annabelle STACEY, Sophie WILCOCK.

Year 5: Bridget ARDEN, Alyssa BARROW, Brigitte CRICK, Sarisha DHAWAN, Stephen ELKINGTON, Chloe GIBBON, Raj KAUR, Ella SEWELL, Abigail WALLACE, Amy WANG.

Year 6: Bronte MARTINE, Imogen HEENAN, Isabella MITSOS, Isabelle MUIR, Rhiannon SOLTAN.

## HEADLICE

We have had an increased number of headlice infestations throughout the school recently. **PLEASE CHECK YOUR CHILD'S HAIR REGULARLY FOR EGGS & / OR ADULT LICE.** There are a number of over the counter treatments available, but these must be repeated 5–7 days after the initial treatment. Headlice do not discriminate .... **and they love clean hair! Everyone is susceptible!** Please be diligent with checking as it is the only way to control an outbreak.



## CANTEEN ORDERS ON QKR

Thank you to everyone who is now ordering from the canteen using QKR. Orders have increased at the canteen and the amount of cash being handled is right down to a minimum. **Please tell you friends how easy it is, we'd love to have you all on board!**



## RITCHIES COMMUNITY BENEFITS

Sandie Wishart  
Business Manager

When a Ritchies' Community Benefit Card is scanned at the checkout at one of their supermarkets or liquor stores, a donation of 0.5% of the total spend is allocated to the charity chosen by the customer and our school receives regular donations from the Program.

**If you don't have a Community Benefits Card, and you shop at Ritchies, please come and collect a card and get things rolling, it's an easy way to support your school.**

## KEEP THE FAMILY ENTERTAINED THESE SCHOOL HOLIDAYS—WITH AN ENTERTAINMENT™ MEMBERSHIP

Foundation to Year 4 students will have received a colouring competition sheet, with details on how to purchase. We have ten ice-cream vouchers available to the top ten entries in this competition. Entries close on Wednesday 24 June and can be dropped at the School office.

**Entertainment™ Books and Entertainment™ Digital Memberships** are still available. The more Memberships we sell, the more we raise - so please forward show this notice to your family and friends. Memberships are available now and packed with thousands of up to 50% off and 2-for-1 offers. For just \$65, you'll receive over \$20,000 worth of valuable offers. Use just a few of these offers and you'll more than cover the cost of your Membership!

## ORDER NOW

<https://www.entertainmentbook.com.au/orderbooks/189e452>





## MORDIALLOC NEIGHBOURHOOD HOUSE



### NEW!!! MOSAICS

Learn the basics of mosaic art and enjoy the relaxing process and social outlet that comes with it. Introduction course will run over 3 evenings.

**Mon: 7.00 - 9.00pm**  
**Term 3: Aug 17, 24 & 31**

**Cost: \$80 per 3 week course.**  
**(Includes materials)**

For further information or if you'd like to enrol,  
Please phone: 9587 4534

## CHELSEA HEIGHTS COMMUNITY CENTRE

Beazley Reserve  
160 Thames Promenade  
Chelsea Heights 3196

### Occasional Care

Wednesday and Thursday: 9am to 1pm  
Offering 4 hours of quality care for children - from babies to five year olds.

### Looking for a great venue for your next big family function?

Our large hall catering for up to 200 people could be the perfect choice. We also have smaller room suitable for meetings, classes and workshops.

### Playgroup

Runs on Wednesdays 9.30am to 11am and our Playgroup leader Annabelle looks forward to welcoming families - come and join the fun and make new friends.



Lots of ways to get fit at the Centre over these colder months, Yoga, Pilates, Zumba, Gentle Exercise and Line Dancing. You can improve your art and try new mediums at our Friday morning art class 10am to 12noon.

Please ring 9772 3391 to book, for more details or our Term brochure. Visit our website at [www.chelseaheightscommunitycentre.com.au](http://www.chelseaheightscommunitycentre.com.au) for a full program or just drop on by.

## ASPENDALE TENNIS CLUB

Places available on upcoming school holiday clinics at Aspendale Tennis Club, suitable for beginners right through to advanced competition players. 3 hour clinics are a great way for players to develop technique and confidence. 9am-12pm Monday 6th July - Thursday 9th July.

Places also available for term 3 group lessons, kinder aged students through to adult lessons, please contact Richard Hayward,  
[info@totaltennis.net.au](mailto:info@totaltennis.net.au) or 0406 799 347.



Feelings  
Boundaries  
Social Skills  
Grief and Loss  
Anger  
Fear and Worry  
Self-Esteem

### Kids with Courage

A program designed to strengthen primary aged children who are struggling at school, home or with peer relationships  
For children 7 to 12 years



### Family Support programs

Kids with Courage and Parents with Courage will be running again during Term 3.

Kids with Courage will run on Wednesdays 4pm-6pm and Parents with Courage will run Thursdays 7pm-9pm.

Applications are now open

Visit  
[www.roundaboutkidz.com](http://www.roundaboutkidz.com)  
for more information or call  
03 9551 7871



Parents with Courage

### parents with courage

A program designed to provide parents with the tools and strategies needed to deal with the challenges of raising older primary and high school aged children.

# YOUR LOCAL BASKETBALL CAMP

## SCHOOL HOLIDAY



**Come support your local community.**  
Beginners through to advanced players welcome.



DAY ONE

**When:** Thursday 2nd July 2015  
**Ages:** 6 years – 17 years  
**Where:** Aspendale Gardens Community Centre  
 103-105 Kearney Drive  
 Aspendale Gardens 3195  
**Time:** 9am – 3pm  
**Cost:** \$99 for 1 day  
 \$155 for 2 days  
 FREE pair of Peak basketball shoes per participant  
 Only 40 places available for this day.

DAY TWO

**When:** Friday 3rd July 2015  
**Ages:** 6 years – 17 years  
**Where:** Aspendale Gardens Community Centre  
 103-105 Kearney Drive  
 Aspendale Gardens 3195  
**Time:** 9am – 3pm  
**Cost:** \$99 for 1 day  
 \$155 for 2 days  
 FREE pair of Peak basketball shoes per participant  
 Only 40 places available for this day.



★ Giveaways  
★ Trophies  
★ Prizes

PEAK



**BOOKINGS: Aspendale Gardens Community Service 9587 5955**  
 Bookings close Friday 26th June 2015.

## MORDIALLOC NEIGHBOURHOOD HOUSE ART FOR PLEASURE


An art class to suit all skill levels and mediums of choice.  
 Enrolments are now being taken for Term 3  
 Commences, Wednesday, July 15.  
 9.30 – 11.30 am.

**For further information or if you'd like to enrol,**  
 Please phone: 9587 4534



**Mordialloc College invites parents & carers to a free presentation:**

## Navigating Adolescence



Adrian McMaster is a local psychologist who has many years of experience working with adolescents and families. Join us for Adrian's presentation as he shares his knowledge about what parenting strategies are helpful during your child's adolescence and some of the behaviour that makes life harder at home. Adrian speaks to parents honestly and candidly about how to relate to their children in a proactive way. Adrian's session is sure to provide you with useful tools to assist you in supporting your child from childhood to adulthood. Adrian has dedicated some time at the end of the presentation for questions.

**When: Wednesday 22<sup>nd</sup> July**  
**Time: 6.30 – 8pm**  
**Where: The year 7 Learning Centre**

For all enquiries and rsvp: contact Wellbeing – 9584 1184 or email  
[douglas.diane.j@edumail.vic.gov.au](mailto:douglas.diane.j@edumail.vic.gov.au) or [paten.lana.n@edumail.vic.gov.au](mailto:paten.lana.n@edumail.vic.gov.au)



## CHELSEA BASKETBALL HOLIDAY CAMP



Conducted by USA Imports  
 Corey Standefer & Jasmine Lovejoy  
 10.00am-3.00pm  
 June 30, July 1 & 2 / July 7, 8 & 9  
 Bonbeach Stadium

\$90 for 3 days or \$35.00 per day  
 Registration forms available on website or email  
[manager@chelseabasketball.com.au](mailto:manager@chelseabasketball.com.au)  
[www.chelseabasketball.com.au](http://www.chelseabasketball.com.au)





Gentle and Caring Services  
Children's Dental Therapist  
General, Cosmetic  
& Implant Dentistry  
Exams for children under 4 free

**9590 9120**  
www.dentalharmony.com.au  
286 Wells Road,  
Aspendale Gardens



dental harmony

## Develop the confidence of a winning smile

Take advantage of our **free initial visit** and get some professional advice from a specialist orthodontist today. **No referral is necessary.**



 **straight orthodontics**  
health | harmony | confidence

45 Balcombe Rd, Mentone 3585 8000 [straightorthodontics.com.au](http://straightorthodontics.com.au)

Edithvale Physiotherapy  
**Tried everything? Try us!**  
Physiotherapy • Massage • Myotherapy • Pilates



**Tel (03) 9772 3322**  
285 Nepean Hwy, Edithvale [psmgroupp.com.au](http://psmgroupp.com.au)

EDITHVALE  
PHYSIOTHERAPY  
CLINIC

## Enjoy FREE Movies these holidays at Chelsea Activity Hub...

**Thursday**  
**2nd July 2015**  
**10am Start**

**SpongeBob Squarepants**




BYO Drinks & Snacks  
to both sessions

**PADDINGTON**  
**THURSDAY**  
**9th July 2015**  
**10am Start**



Chelsea Activity Hub  
8-9 Shewell Ave, Chelsea • 9773 9720 • [chelseaactivityhubpaddingtonbear.com.au](http://chelseaactivityhubpaddingtonbear.com.au)  
[kingston.org.au](http://kingston.org.au) TTY 8574506 111 111420

KINGSTON

## KUMON CHELSEA EDUCATION CENTRE

5 Blantyre Avenue, Chelsea 3196

**Math:** (arithmetic, fraction, algebra)

**English:** (grammar, spelling, reading comprehension)

Please call the instructor, Lena Gvirtsman on  
0402 065 154 for an appointment

The benefits of Kumon method will be explained.  
Free testing in Maths and/or English  
Also offering 2 weeks free trial  
Then you can decide if that's what your children need

 **Twinkles@Starry Faces**  
**Face Painting & Ballooning**

Mobile: 0413 420 429  
Email: [twinkles@starryfaces.com.au](mailto:twinkles@starryfaces.com.au)  
Website: [www.starryfaces.com.au](http://www.starryfaces.com.au)  
[www.facebook.com/twinkles.facepaintingballooning](http://www.facebook.com/twinkles.facepaintingballooning)





Before & After School Care



## Edithvale Before School Care

Beginning 13<sup>th</sup> July 2015

Following feedback from Edithvale families, The City of Kingston is excited to announce that a trial of the Edithvale Before School Care Program will begin on the 13<sup>th</sup> of July 2015.

The trial period will end on the 18<sup>th</sup> of December with the expectation of continuing into 2016 if the program is successfully utilised. All Edithvale families, including those already enrolled with After School Care are encouraged to call and book now!

### Enquiries and Enrolments

To enquire or enrol please contact:  
City of Kingston Central Administration  
☎ 9581 4867 ✉ [saccadmin@kingston.vic.gov.au](mailto:saccadmin@kingston.vic.gov.au)

Enrolment forms and additional information can be found at:  
[kingston.vic.gov.au/oshc](http://kingston.vic.gov.au/oshc)

### Please note.....

New families enrolling to Edithvale Before and After School are advised that there is a 5 day processing period for all new enrolments.



**\$135**  
FOR TWO DAYS  
Early bird  
special\*

\*Early bird special:  
register and pay before  
16<sup>th</sup> June 2015  
Offering Family Discount!

**CHELTHAM SECONDARY COLLEGE**

Bernard Street, Cheltenham

All levels | Boys and girls | 6-14 years

TUE 30<sup>th</sup> JUNE & WED 1<sup>st</sup> JULY 2015 | 9.30am-3pm  
**BASKETBALL**  
SCHOOL HOLIDAY CAMP



Beginner | Intermediate | Advanced  
Separate programs

**\*TOURNAMENT PLAY**  
**\*3 ON 3 COMPETITIONS**  
**\*SKILLS TEST**  
**\*INNOVATIVE PROGRAM**  
**\*FUNDAMENTAL DEVELOPMENT**  
**\*MULTIPLE AWARDS/PRIZES**

**\*NATIONAL AND INTERNATIONAL PLAYERS AND COACHES**

**NEW! HOOP SMART T-SHIRT**

**DAMIAN STAM** - Former Australian Boomie, European Pro Basketball and NRL player

Follow us on

Team building | Leadership | Life skills | Goal setting | Educational workshop | Special guests and coaches  
**REGISTRATIONS CLOSE: 29<sup>th</sup> JUNE 2015 | Register at [hoopsmart.com.au](http://hoopsmart.com.au)**  
For more information call 0406 488 313 or email [admin@hoopsmart.com.au](mailto:admin@hoopsmart.com.au)

# **School Holiday Drama Workshop Program**

**In Our School Hall**

**29 & 30 June & 1 July / 9.00 am to 5.00 pm**



## **Three Days of Head Spinning Fun**

**School Holiday Workshop Could Be**

**A Mini Musical, A Short Play or A Group Play Building on a Theme**

Limelight Acting Australia has discovered actors who have appeared in  
'Where the Wild Things Are' and TV Series such as 'Tangle' on Foxtel.

**No pressure, but Talent Scouts are Watching!**

### **Our Teachers are well versed in**

Acting Tuition, Clowning, Circus Skills, Dance, Singing Music,  
Theatre, Story Writing Theatre Sports, Film Making,  
Junior Tropfest, Voice, Presentation Skills

### **Your Commitment**

Drop off is 8.30 am Pickup by 5.30 pm

Group performance end of third day @ 4.30 pm

Provide Lunch and 2 snacks (No Nuts)

### **Financials**

Childcare Rebate Receipts Available

\$40 Half Days

\$70 per day

\$210 for the 3 day workshop

### **Location**

Edithvale Primary School – 42-54 Edithvale Road, Edithvale.

**Day 1:** Monday 29<sup>th</sup> June

**Day 2:** Tuesday 30<sup>th</sup> June

**Day 3:** Wednesday 1<sup>st</sup> July

**Teacher:** Kath Lucas

**To Book—Contact us on 0421 149 042**

**Sign Up Here:** <http://www.limelightacting.com/SHP.html>



## REGISTRATION FORM

Name of Child \_\_\_\_\_ Age \_\_\_\_\_

Parent's Name \_\_\_\_\_

Address \_\_\_\_\_

Phone Home \_\_\_\_\_ Phone Mobile/Work \_\_\_\_\_

Email \_\_\_\_\_

Emergency Contact Name (other than parent) \_\_\_\_\_

Phone \_\_\_\_\_

Allergies and/or medical conditions \_\_\_\_\_

SPECIAL NEEDS: Please tick Y ☐ N ☐

Name of Medical Fund \_\_\_\_\_

Medicare Number \_\_\_\_\_

Ambulance Fund: Please tick Y ☐ N ☐

Parent/Guardian Declaration  
I, the undersigned approve of my child/ren named above to participate in the holiday program as organised by the Mordialloc Community Centre. I agree that neither the MCC nor its workers will be liable for lost property, or damage or injury, however caused of whatever nature, sustained by the children in attendance at any program or any of these activities in conjunction with the program. I authorise the person in charge of the event to consent, where it is impracticable to communicate with me, to obtain all necessary medical assistance as may be deemed and agree to meet any expenses incurred by such treatment. I recognise that part of the program will be conducted at venues outside the building and give permission for my children to be transported to such venues as required, be it mini-bus, coach, private car, train or other. During excursions, I agree that my child will wear the designated clothing and name tags for identification purposes.

Name: \_\_\_\_\_

Signature: \_\_\_\_\_

Date: \_\_\_\_\_

Photo permission for use internally and on social media:  
Please tick Y ☐ N ☐

## WHAT TO BRING ON THE DAY



REMEMBER TO PACK:  
Lunch and snacks  
Drinks  
Sunscreen  
Hat  
Closed toe shoes



### CANDY BAR OPTIONS:

Kids Box: Popcorn, juice box and chocolate bar \$8  
Choc Top: vanilla, mint or chocolate \$4.70

Please bring correct money on the day.  
NO CHANGE WILL BE GIVEN.  
Please note - Movie and/or movie options will be released on FRIDAY 10TH JULY - NO EARLIER.



### BUS

Travelling by bus to activities fully equipped with seatbelts



### CAMP MCC

Activities run by MCC staff and leaders at MCC



### INCURSION

Specialised professional staff running activities inside the centre



### WALKING

Walking to and from activities

Note: Participants must be signed out from the small hall at the end of each session before they are permitted to leave. We appreciate your co-operation.

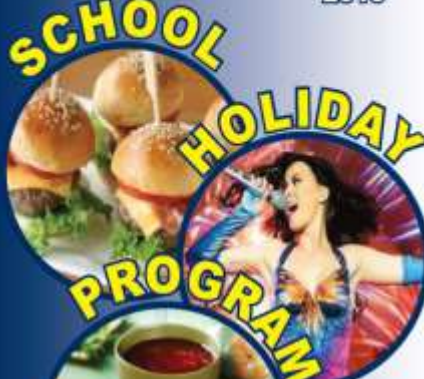
### NO BOOKINGS WITHOUT PAYMENT

Please Note: All bookings are non-refundable and non-transferable due to pre-arranged program agreements.

## MORDIALLOC COMMUNITY CENTRE

# JULY

2015



Quality Fun, **Great Value**  
Holiday Entertainment  
for primary school kids



### BOOKINGS

115A Warren Rd, Mordialloc 3195  
Phone: 9580 3675

Email: gemma@mordiac.org.au

www.mordialloccommunitycentre.org.au

BYO EVERYDAY: Lunch, snacks, drinks, sunscreen and hat. Please do not bring any nut products.

## HOLIDAY PROGRAM - PRIMARY SCHOOL



	MONDAY	TUESDAY	WEDNESDAY	THURSDAY	FRIDAY
WEEK ONE	<b>29 JUNE</b> <b>Activity 1</b> 9.00am - 11.00am Join Fitness Boot Camp for a variety of fun, challenging and very high energy activities including obstacle courses, aerobic stations, circuits and team building activities to build strength, speed and endurance. <b>Activity 2</b> 11.00am - 1.00pm Practice your cheer moves with pom-poms, lifts and tricks AND play a number of ball sports in our gym and outdoors. <b>Activity 3</b> 1.30pm - 4.30pm Get creative with buttons, making mini-dolls to take home. Make a wall hanging, keyring or decoration for your bedroom!	<b>30 JUNE</b> <b>Activity 1</b> 9.00am - 1.00pm Jump into the JUMP pits, up the walls and across the floors at Jump Central - the newest trampolining centre. *BYO - Jump Central socks (if you have them). <b>Activity 2</b> 1.30pm - 4.30pm Make your own Cold Rock ice-cream treats, before relaxing in our cosy, pillow-filled movie area at MCC to watch a DVD! *Notify the office of allergies.	<b>1 JULY</b> <b>Activity 1</b> 9.00am - 11.00am Roll up, roll up to the Fitness Circus, learning juggling, hoops, scarves, plates, diabolo, acrobatics, stunts and balances. <b>Activity 2</b> 11.00am - 1.00pm Get into your trivia groups and take on the other teams in the Mordialloc Trivia Morning. Complete the challenges to win extra points. Who will take home the trophy? <b>Activity 3</b> 1.30pm - 4.30pm Check out new Inflatable World in Oakleigh, jumping on the inflatable, playing in the inflatable arena and on the slides. *BYO socks.	<b>2 JULY</b> <b>Activity 1</b> 9.00am - 11.00am Kicks-chose your way through a morning of skills with Brooke, MCC's Junior Karate instructor. <b>Activity 2</b> 11.00am - 1.00pm It's time for arts and crafts with Milla, our Senior Art teacher - get imaginative and create take home artwork. <b>Activity 3</b> 1.30pm - 4.30pm Tumble, flip, stretch and play in our gymnastics room, and bust a move to funky music with our dance teachers.	<b>3 JULY</b> <b>Activity 1</b> 9.00am - 1.00pm Make rice paper rolls, banana and chop chip muffins AND apricot and coconut slice in a morning full of cooking fun. *Notify the office of allergies. *BYO container for food. <b>Activity 2</b> 1.30pm - 4.30pm Jump on the bus as we head to Southland to see the latest movies as they hit the big screen. *NOTE - PTO for movie details.
	<b>6 JULY</b> <b>Activity 1</b> 9.00am - 11.00am Follow the clues and solve the problems to complete the Treasure Hunt, moving around the oval, playground and indoors to find the treasure of the end! <b>Activity 2</b> 11.00am - 1.00pm It's time for arts and crafts with Milla, our Senior Art teacher - get imaginative and create take home artwork. <b>Activity 3</b> 1.30pm - 4.30pm Play kick to kick and practice your handballing at our FOOTY clinic, then hit a six and bowl a spinner during our CRICKET session.	<b>7 JULY</b> <b>Activity 1</b> 9.00am - 11.00am Build and grow your own Herb Garden, learning about different herbs and the best ways to grow them! <b>Activity 2</b> 11.00am - 1.00pm It's ZUMBA time. Join us for a chance to be active and jam out to your favourite music, learning new moves, then play in the gym on our bouncy floor. <b>Activity 3</b> 1.30pm - 4.30pm Climb Spider Mountain, through the rocky caves and scale the colourful walls to the top at Bayside Rock Climbing!	<b>8 JULY</b> <b>Activity 1</b> 9.00am - 1.00pm Defy gravity at Gravity Zone Trampoline Centre, by bouncing off the walls, into the foam pits and slalom dunking on the basketball rings. *BYO Gravity Zone socks (if you have them). <b>Activity 2</b> 1.30pm - 4.30pm Join us for Winter Art - create decorations and artwork using Winter Wool and other chilly materials.	<b>9 JULY</b> <b>Activity 1</b> 9.00am - 1.00pm Make mini hamburgers, choc chip and berry muffins AND apple cinnamon cookie bars to enjoy for lunch. *Notify the office of any allergies. *BYO container for food. <b>Activity 2</b> 1.30pm - 4.30pm Listen to your favourite music hits on your own pair of high quality headphones. Play games and follow instructions in our Silent Disco afternoon, with Party Higher.	<b>10 JULY</b> <b>Activity 1</b> 9.00am - 1.00pm Katy Perry is coming to Mordialloc, at Parkdale Secondary College. Walk across the road to watch the tribute show with dancing, singing and performing and then meet Katy yourself! <b>Activity 2</b> 1.30pm - 4.30pm It's games afternoon, including time in the gymnasium room, outside and lots of group games.
	<b>13 JULY</b> <b>Activity 1</b> 9.00am - 11.00am Follow the clues and solve the problems to complete the Treasure Hunt, moving around the oval, playground and indoors to find the treasure of the end! <b>Activity 2</b> 11.00am - 1.00pm It's time for arts and crafts with Milla, our Senior Art teacher - get imaginative and create take home artwork. <b>Activity 3</b> 1.30pm - 4.30pm Play kick to kick and practice your handballing at our FOOTY clinic, then hit a six and bowl a spinner during our CRICKET session.	<b>14 JULY</b> <b>Activity 1</b> 9.00am - 11.00am Build and grow your own Herb Garden, learning about different herbs and the best ways to grow them! <b>Activity 2</b> 11.00am - 1.00pm It's ZUMBA time. Join us for a chance to be active and jam out to your favourite music, learning new moves, then play in the gym on our bouncy floor. <b>Activity 3</b> 1.30pm - 4.30pm Climb Spider Mountain, through the rocky caves and scale the colourful walls to the top at Bayside Rock Climbing!	<b>15 JULY</b> <b>Activity 1</b> 9.00am - 1.00pm Defy gravity at Gravity Zone Trampoline Centre, by bouncing off the walls, into the foam pits and slalom dunking on the basketball rings. *BYO Gravity Zone socks (if you have them). <b>Activity 2</b> 1.30pm - 4.30pm Join us for Winter Art - create decorations and artwork using Winter Wool and other chilly materials.	<b>16 JULY</b> <b>Activity 1</b> 9.00am - 1.00pm Make mini hamburgers, choc chip and berry muffins AND apple cinnamon cookie bars to enjoy for lunch. *Notify the office of any allergies. *BYO container for food. <b>Activity 2</b> 1.30pm - 4.30pm Listen to your favourite music hits on your own pair of high quality headphones. Play games and follow instructions in our Silent Disco afternoon, with Party Higher.	<b>17 JULY</b> <b>Activity 1</b> 9.00am - 1.00pm Katy Perry is coming to Mordialloc, at Parkdale Secondary College. Walk across the road to watch the tribute show with dancing, singing and performing and then meet Katy yourself! <b>Activity 2</b> 1.30pm - 4.30pm It's games afternoon, including time in the gymnasium room, outside and lots of group games.

Money is not to be provided unless specified. Any extra money provided in not permitted for spending.  
ALL ACTIVITIES WEATHER PERMITTING - SUBJECT TO CHANGE

## BOOKING FORM PTO to complete Registration Form

Child's Name: \_\_\_\_\_

WEEK 1	Activity	Time	Price	Booked
MON 29 JUNE	1	9.00am - 11.00am	\$15	<input type="checkbox"/>
	2	11.00am - 1.00pm	\$15	<input type="checkbox"/>
	3	1.30pm - 4.30pm	\$15	<input type="checkbox"/>
TUES 30 JUNE	1	9.00am - 1.00pm	\$35	<input type="checkbox"/>
	2	1.30pm - 4.30pm	\$15	<input type="checkbox"/>
	3	1.30pm - 4.30pm	\$20	<input type="checkbox"/>
WED 1 JULY	1	9.00am - 1.00pm	\$15	<input type="checkbox"/>
	2	11.00pm - 1.00pm	\$10	<input type="checkbox"/>
	3	1.30pm - 4.30pm	\$20	<input type="checkbox"/>
THURS 2 JULY	1	9.00am - 11.00am	\$15	<input type="checkbox"/>
	2	11.00am - 1.00pm	\$15	<input type="checkbox"/>
	3	1.30pm - 4.30pm	\$15	<input type="checkbox"/>
FRI 3 JULY	1	9.00am - 1.00pm	\$20	<input type="checkbox"/>
	2	1.30pm - 4.30pm	\$25	<input type="checkbox"/>
	<b>TOTAL \$</b>			
WEEK 2	Activity	Time	Price	Booked
MON 6 JULY	1	9.00am - 11.00am	\$15	<input type="checkbox"/>
	2	11.00am - 1.00pm	\$15	<input type="checkbox"/>
	3	1.30pm - 4.30pm	\$15	<input type="checkbox"/>
TUES 7 JULY	1	9.00am - 11.00am	\$10	<input type="checkbox"/>
	2	11.00am - 1.00pm	\$15	<input type="checkbox"/>
	3	1.30pm - 4.30pm	\$25	<input type="checkbox"/>
WED 8 JULY	1	9.00am - 1.00pm	\$35	<input type="checkbox"/>
	2	1.30pm - 4.30pm	\$15	<input type="checkbox"/>
	3	1.30pm - 4.30pm	\$20	<input type="checkbox"/>
THURS 9 JULY	1	9.00am - 1.00pm	\$20	<input type="checkbox"/>
	2	1.30pm - 4.30pm	\$25	<input type="checkbox"/>
	3	1.30pm - 4.30pm	\$20	<input type="checkbox"/>
FRI 10 JULY	1	9.00am - 1.00pm	\$25	<input type="checkbox"/>
	2	1.30pm - 4.30pm	\$20	<input type="checkbox"/>
	<b>TOTAL \$</b>			

CHEQUE ☐ CASH ☐ EFTPOS ☐ Visa/Mastercard ☐

CCV: \_\_\_\_\_

Note: All bookings are non-refundable and non-transferable due to pre-arranged program agreements.  
What School does your child attend? \_\_\_\_\_

EDITHVALE PRIMARY SCHOOL—CALENDAR—TERM 3, 2015 *(These events can also be found on Tiqbiz)*

[illegible]