



# EDITHVALE PRIMARY SCHOOL

FORTNIGHTLY NEWSLETTER

Edithvale Road, Edithvale, Victoria 3196  
Phone: (03) 9772 1393 Fax: (03) 9772 7307  
Web: [www.edithvaleps.vic.edu.au](http://www.edithvaleps.vic.edu.au)  
Email: [edithvale.ps@edumail.vic.gov.au](mailto:edithvale.ps@edumail.vic.gov.au)

Term 2—Week 5

23 May 2014

Doing the Right Thing, Working Together & Aspiring Higher

## PRINCIPAL'S REPORT Mrs Denise Webster

This week is Education Week in Victorian schools and, as always, we have had a number of very welcome visitors come to see how we learn at Edithvale Primary School. There have been visits from pre-schoolers and their parents, as well as a wonderful turn out of students and families for the Family Maths Night on Monday.

We are very proud of our school and students and it is affirming to see and hear our students as they talk so articulately and positively about their life at EPS. We are particularly proud of our school leaders and senior students who have been great ambassadors during this exciting week of events.

Students were thrilled to be involved in 'Walk Safely to School Day' on Wednesday as well as participate in the obstacle course designed by school leaders to raise money in support of Oxfam. \$511.45 was collected and demonstrates again how well our school community supports those in need.

Naplan testing concluded at the end of last week and I would like to congratulate our students in Years 3 and 5 for giving their best effort over the period of the testing.

We have a number of enrolments for 2015 Foundation (Prep) classes. If you are already a member of our school community and have a child who will be starting school next year, could you please see Pru or Kerry at the office to pick up an enrolment pack.

## SAFE ROUTES to SCHOOL PROGRAM Mr James Whitla

As you may know we have been working with Kingston Council on the Safe Routes to School program. There's been a great effort by students who have participated in the Free Feet pedometer competition, Walk to School Day and Ride2School day.

Additionally, with Kingston we've run consultations, training and other road safety activities to raise awareness, identify issues and create strategies for positive change.

As the program nears completion, once more we are keen to know your views about safe passages to school for our students. This could help enable further change, and also demonstrates our commitment as a school community to road safety. So, please take a few minutes to complete this short survey:

[https://www.surveymonkey.com/s/saferoutestoschools\\_may2014](https://www.surveymonkey.com/s/saferoutestoschools_may2014)

To encourage as many parents as possible to complete the survey, Kingston Council are offering:

- 1 iPod shuffle to one lucky parent (drawn at random)
- \$500 (to the school with the highest parent response, proportionately)

Remember it's only 5 schools who participate in SRTS, so we're in with a good chance...survey closes on Tuesday 27th May.

## YEAR 7 TRANSITION FORMS

Transition Forms were due back to School today. If you have not yet returned yours, then please bring it to School on Monday. Thank you.



## SCHOOL FEES & CHARGES

### Sandie Wishart—Business Manager

The second instalment of Fees and Charges was due on 28 April 2014 and has now been deducted where you provided your credit card details. If you elected to pay your instalment by cheque or BPay, would you please do so now. And, if you have updated your credit card and have a new number or expiry date, please remember to let us know.

It is great to see so many people using BPay. This is our preferred method of payment, however, please try to make your payments for \$20 or more, as we incur fees for each transaction (you may incur a fee as well) and it is not so cost effective for small amounts of money. Please note also, that when you make a payment, you need to email me or send a note along to school, so I know what to allocate your money to.

[edithvale.ps@edumail.vic.gov.au](mailto:edithvale.ps@edumail.vic.gov.au)

You don't need to make 2 or 3 separate payments for your various charges, you can combine them all in one.

## PAYMENT ENVELOPES

If you would like some School Payment Envelopes, they are available from the office. Just drop by and collect a few next time you are up at the School.

## STAFF CARPARK

For the safety of students and parents, we ask that parents park in the street and use other entrances. **The carpark is for staff use only.**

## SECOND HAND UNIFORM SHOP

Many thanks to those who continue to donate good quality, saleable items for the Second-hand Uniform Shop.

Unfortunately we are receiving a large number of items which are ripped, stained and dirty - these items are not up to the standard we would not feel comfortable asking money for them. We ask that you please check over any items before you donate them. PSW items are preferred.

## SCHOOL PHOTOS

School photographs were distributed earlier this week. If your child didn't receive all or part of your order, please contact Pru or Sandie in the office and we will follow up the problem.

## CANTEEN

### Mrs Diane Cameron

I will start my report by firstly thanking my wonderful volunteer helpers who give up their time to help me prepare lunch orders and help serve during recess and lunch times. The Canteen would not operate as well without you :-)

The Canteen will be running a "HOT DOG DAY" ON THE LAST DAY OF TERM WHICH IS **FRIDAY 27 JUNE**. If there are any other parents wanting to help out on this day, come along first thing in the morning or later in the morning. Many hands have fun and get to meet other parents at the school. Forms will be sent out in two weeks.

## CANTEEN ROSTER—TERM TWO

Mon 26	Tue 27	Thu 29	Fri 30
Jane Donaldson	Fleur Eddey	Lara Sinclair	Curriculum Day
Mon 2	Tue 3	Thu 5	Fri 6
Nonie Hare	Kate Gibbon	Debbie Bond	Kellie Kingsley Rachel Hepworth

## ENTERTAINMENT BOOKS

Entertainment books were sent home with all Prep children recently, and an order form with all other year levels. If you do not wish to purchase the book sent home, please return it to school ASAP. If you do wish to keep the book, please make your payment online, or send your payment along to school ASAP. Thank you.

## EMA APPLICATIONS

Educational Maintenance Allowance (EMA) applications for Semester 2 are due by 1 August. To be eligible to receive this allowance parents/guardians must have a Centrelink Health Care Card or Pension Card which is valid on the first day of Term 3 (ie: 14 July 2014). Application forms are available at the office.

If you are new to Edithvale Primary School or have received a Health Care Card or Pension Card since March, you will need to fill in an application form.

**If you received EMA in Semester 1, and your circumstances have not changed, you do not need to re-apply.**

## FAMILY MATHS NIGHT

### Charlotte Noon

On Monday 19 May, we opened the doors of the Learning Centre to kick-off Education Week by hosting Family Maths Night.

This celebration hosted dozens of hands-on activities designed to engage and challenge our families in the world of Maths! With over 75 families participating, the classrooms buzzed with Maths language, laughter, thinking, and just a bit of competition. "I had to think and use my mind while building structures," said Tom

Wilcock. "I had to think in my head and then draw my box," commented Bailey Green.

"It was so fun to see how my family figures out problems," stated Stephen Elkington. Dressing up for the event in a black suit, Tyler Ling, mentioned that the Knight's Tour was by far his favourite activity.

Today at assembly, four lucky families will walk away with prizes. One family, estimated the correct number of jelly beans in a jar and will probably spend the weekend organising them by colour, while the other three families will hopefully be enjoying one of the family board games awarded as a raffle prize.



## CIVICS & CITIZENSHIP

As a part of the Year 4 Civics and Citizenship Inquiry, we are learning about immigration into Australia. Students will be learning about their own families and how they, as well as, others have contributed to the development of Australia. During this unit, students will be asked to interview an immigrant to learn about the process for entry into Australia, the reasons behind wanting to move to Australia, and their adjustment to a new country.

Last week we were fortunate to have Mrs McMaster (Della), Mr McMaster's grandmother, come in to speak about her experience. Her experience is quite different compared to recent immigrants.

Adella (age 25 at the time), originally from Ireland, married Bill and they moved to Scotland. Sadly, there was no work in Scotland and the Australian government offered to pay for the McMaster family to move to Australia, where Bill

worked as a bricklayer and Della was a stay-at-home mother of four children. Arriving by ship with only four suitcases, they lived in a hut for two years and quickly fell into the Australian way of life by fishing and caravanning around the country. Students were intrigued by the fact that the only papers that we needed for the immigration process were references from the family's minister. She was sad to give up a very traditional New Year's celebration that was near and dear to the British. However, having some family already living in Australia helped with the transition. Speaking of transition, Adella learned the love of footy after being a soccer fan for so many years. We were grateful for this glimpse into some McMaster history and we look forward to learning more about our own ancestors.

## ENVIRONMENT CLUB UPDATE

### Claire Goudey

This term, Environment Club has been busy weeding our vegetable gardens and getting them ready to plant new seeds. It's lovely to see new faces each week, and the children really enjoy getting their hands dirty and helping make our school look beautiful!

Unfortunately, little hands aren't quite as good at pulling out weeds as big hands. We would really like to have some adult help weeding and caring for our garden! If you have an hour or so to spare and would like to help in the garden, we would love to hear from you.

We are also in the planning stages of our new vegetable garden which will be on the side of the

Learning Centre, next to the staff car park. With all of the great ideas and designs that we received from students last term, we have been busy trying to decide what to include!

Soon, we will be ready to begin construction of the garden but we need your help! If you have anything that you could donate (eg: timber, seedlings, paint, pots etc) or would like to be a part of this project, please see Miss Goudey or Mrs Noon.

**Don't forget: Environment club meets in the Learning Centre at the beginning of lunchtime on Mondays.**

**New members are always welcome!**







## PREMIERS READING CHALLENGE

Kerry Mitvalsky

The Premier's Reading Challenge is celebrating its 10th Anniversary this year so our aim is to have **every** student participate. A consent form will be sent home with every student today. Please complete it and return to your child's classroom teacher and you will then receive a form to record the books your child has read.

For Years Prep to 2, students will need to read 30 books (20 from the Premiers Reading Challenge List) and for students in Years 3 to 6, 15 books (10 from the Premiers Reading Challenge List). Students will be able to borrow books from our library during their library lesson, but if you wish to change the book prior to their next lesson, the library will be open on Wednesday mornings between 8.30 am and 8.55 am.



If you have any queries, please don't hesitate to ask Mrs Hayes or Mrs M.

## WALK SAFELY TO SCHOOL DAY

SRC Leaders, James Vicendese & Hayley Prasad



This Wednesday we participated in Walk Safely to School Day. It was great to see 219 students walk to school on this day. Congratulations to 5/6 C for having the most people in their class walk to school.

## Oxfam Obstacle Course and Dress up Day

On Wednesday the whole school also dressed up in our best walking clothes to raise money for Oxfam. In total, we raised just over \$500! Wow!



Thank you to everyone who donated to this fantastic cause.

Each class also took part in an obstacle course around the oval, with five different challenges to complete. All of the students did a fantastic job, with each class finishing the course in under four minutes! The classes with the fastest times were 1B and 6A. Well done to all of those students.

## TRANSITION MORNING AT PATTERSON RIVER SECONDARY COLLEGE

Maddy Kingsley & Hayley Prasad

On Monday 5 May, all the Year 6 students went to Patterson River Secondary College. It gave us a chance to see what life at secondary school was like. We saw some past Edithvale students who told us about their experiences at secondary school.

We participated in Science, English, Technology and PE lessons. Afterwards we went for a school tour. We all really enjoyed being 'secondary school students' for a day and can't wait to go to next year.

## CHELSEA HEIGHTS COMMUNITY CENTRE

New exciting Kids Art Class with **Carla Dix** in June. Preschool 4-6 years on Thursday 10am to 11am and School Age 6-10 years on Mondays 4pm to 5pm. Cost \$24 for three sessions.

Bookings are essential.

Phone Centre for dates.

Leave the housework and bring a friend or two to join us on Mondays 12noon to 3pm for Craft a Noon. Learn from each other and have fun sharing each other's craft.

We are taking bookings for the Kinder Activity Group and our child care sessions.

Funky Street Jazz on Thursdays - Dynamic dance classes for kids who love the latest pop music.  
Junior Street Jazz 4.15pm to 5.15pm Funky Street Jazz 5.30pm-6.30pm

Ring 9772 3391 to book, for more details or our Term brochure, and please visit our website for a full program at [www.chelseaheightscommunitycentre.com.au](http://www.chelseaheightscommunitycentre.com.au) or just drop on by.

# Keep saving to win a family underwater adventure holiday.



Plus make friends with the dolphins at Sea World.

The Dollarsmites have found sunken treasure in the Lost City of Savings. For your chance to win a share of exciting prizes, simply make three or more deposits at school during Term 2 and you'll be automatically entered into the competition.

## Major prize.

- Five nights' accommodation at the Sea World Resort & Water Park on the Gold Coast;
- VIP Passes for two adults and three kids to Sea World, Warner Bros. Movie World and Wet'n'Wild Gold Coast;
- A Dolphin Family Aqua Adventure; and
- A \$3,000 travel gift card to get you there.

## Runner up prizes.

130 Toys "R" Us Gift Cards to the value of \$250 each to spend on your favourite toys. Plus, there will be a separate draw of \$1,000 cash for one school in each state/territory.

To find out more, visit

[commbank.com.au/deepseasavers](http://commbank.com.au/deepseasavers)



Things to know before you Can: NSW Permit No. LTPS/14/01689; VIC Permit No. 14/3549; ACT Permit No. TP/14/00705; SA Permit No. T14/347. Competition opens 21/04/14 and closes 4/07/14. Prizes will be drawn on 15/07/14 at Commonwealth Bank, 3/11 Harbour St, Sydney NSW 2000 from 10:00am AEST. Winners' names will be published in the public notices section of The Australian on 18/07/14. Student Prize valued at approximately \$7,539.94 includes \$3,000 Flight Centre Gift Card, VIP Passes to Sea World, Warner Bros. Movie World and Wet'n'Wild Gold Coast Australia for two adults and three children, a Sea World Resort Dolphin Family Adventure and 5 nights' accommodation at Sea World Resort & Water Park, Gold Coast Australia. 130 Runner Up Student Prize of a \$250 Toys "R" Us Gift Card each. Eight School Prizes of \$1,000 cash each. Up to 24 School Earning Co-ordinator Prizes of a \$250 Commonwealth Bank Gift Card each. The Promoter is Commonwealth Bank of Australia ABN 43 123 123 124, 2/11 Harbour Street, Sydney NSW 2000. Full terms and conditions at [commbank.com.au/deepseasavers](http://commbank.com.au/deepseasavers)



## House of HEALTH AND FITNESS

First Session FREE

Come and try a Group session at  
Edithvale Recreational Reserve in Edithvale.

- Group Fitness
- Personal Training
- Box Fit
- Core strength
- 12-week Challenges
- Strength, Cardio, Endurance

To book your FREE SESSION call Kim on 0423 487 398

[WWW.HOUSEOFHEALTHANDFITNESS.COM.AU](http://WWW.HOUSEOFHEALTHANDFITNESS.COM.AU)



## Learn to swim like a fish

Free introductory lesson

PHONE NOW 9558 0666

We're located at Goodlife, cnr of Centre Dandenong & Tootal Rds  
[www.kingswim.com.au](http://www.kingswim.com.au)



## A Gift for Mums

Mums are always taking care of others - so now Contours wants to take care of them! We are giving all Mums the gift of health, happiness and a fantastic new look!

**Mums train FREE the month of May!**

Call 9587 2150 now for your FREE workouts!

Contours Aspendale Gardens  
Shops 10&11, Narelle Dr Aspendale Gardens Shopping Centre

[facebook.com/ContoursAU](https://www.facebook.com/ContoursAU)

*Contours*

Fitness for women on the go.

[contours.net.au](http://contours.net.au)

\* Terms and conditions apply. Not valid for current Contours members. See in studio for full details.





## ASPENDALE GARDENS COMMUNITY SERVICE

**INC.** 103-105 Kearney Drive  
ASPENDALE GARDENS VIC 3195

Tel: (03) **9587 5955** Fax: (03) 9587 5280

Email: [enquiries@agcsinc.org.au](mailto:enquiries@agcsinc.org.au)

Website: <http://www.agcsinc.org.au>

ABN 45971536394

### Playgroup

Playgroup is a wonderful experience for children and a chance for parents/carers to meet other people going through similar experiences in a warm, friendly and informal setting.



Times: 10.15am to 11.45am every Monday  
9.30am to 11.30am every  
Wednesday and Thursday

Cost: \$55.00 per term

Bookings are essential and can be made by contacting our office.

### Women's Social Netball

Are you wanting to keep fit, have fun and meet new people? The Aspendale Social Netball League is looking for new players and/or teams to join their competition. Games from 7.00pm on Mondays and Thursdays. For more information, contact Gill on 0419 881 615



### Zumba for Adults

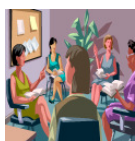
Class times: High Impact - Wednesdays 7-8pm  
Low Impact/Beginners -  
Sundays 9.30am to 10.30am

Cost: \$5.00 for the first class, then \$10.00 thereafter on a casual basis OR a 10 class pass can be purchased for \$90.00, which is valid for 4 months.

For more information, please contact Tanya directly on 0424 753 329 or email her at [garach.dancestudio@gmail.com](mailto:garach.dancestudio@gmail.com)

### Hall Hire

Looking for a venue for your next party, function or seminar that is close to home? Located in a parkland setting, our Centre has a warm and friendly atmosphere with a range of rooms available and lots of off street parking. We can offer a carpeted room which opens up to a fenced off outdoor area and is perfect for a function of up to 100 people. Our large multi-purpose hall (with stage) can be hired for larger functions or indoor sporting events. Both rooms have access to an industrial kitchen. A BBQ is also available for hire by request.



For further information on our services see our website [www.agcsinc.org.au](http://www.agcsinc.org.au), call us on 9587 5955 or



## City of Kingston Vacation Care Program

We are excited to bring to you the Brochure and Enrolment form for the autumn 2014 Vacation Care program.

This program has been developed through consultation with children, families and educators during the April vacation care program. It is a fun filled program giving children opportunities to follow their interests, have new experiences, make new friends, explore, learn, discover and experience success through play.

**Enrolments Start on Monday 2 June &  
Close on Friday 20 June, 2014.**

It is requested children who require support for inclusion in a program, submit enrolment and payment forms as early as possible to allow time to apply for funding.

Don't miss out on your children's spot at one of our fantastic programs to find out more visits Kingston's website [www.kingston.vic.gov.au](http://www.kingston.vic.gov.au). For enquiries please call the Vacation Care Team on (03) 9581 4846 or (03) 9581 4875.

## MORDIALLOC NEIGHBOURHOOD HOUSE

Searching for a creative outlet?  
Why not join our art class?  
**ART FOR PLEASURE**

A class to suit all skill levels.  
WEDNESDAY: 9.30-11.30am  
For enrolments & further information,  
please phone 9587 4534

Tai Chi is famous for its health benefits. Students can soon experience better balance, co-ordination, flexibility, agility, increased strength, alertness and calmness. Tai Chi is gentle, peaceful and non-competitive.  
Suitable for all ages.  
New students are welcome to join any time during the term.

**TAI CHI**  
**Tuesday: 1.30 – 2.30pm**  
**\$10 per session**  
For more information – bookings  
**Please phone: 9587 4534**

# Develop the confidence of a winning smile

Take advantage of our **free initial visit** and get some professional advice from a specialist orthodontist today. **No referral is necessary.**



**straight** orthodontics  
health | harmony | confidence

45 balcombe rd, mentone 9585 8000 [straightorthodontics.com.au](http://straightorthodontics.com.au)



**CHELSEA ARCADE  
MEDICAL**

HEALTH GROUP

**OPEN NOW**

Monday - Friday 8:00am to 6:00pm  
Saturday 9:00am - 1:00pm

**Bulk Billing**

**FLU VACCINE AVAILABLE NOW**

Shop 10 & 11, 426 Nepean Highway  
**CHELSEA | 9772 9878**  
[www.camedical.com.au](http://www.camedical.com.au)

## ON-SITE PATHOLOGY

- GP & Nurse Services
- Chronic Disease Management
- Health Assessments
- Women's Health
- Pre-conception Counselling
- Antenatal Care
- Pap Smears
- Travel Vaccinations
- Immunisations
- Child's Health
- Men's health
- Occupational health
- Skin Checks
- Male & Female Doctors



Gentle and Caring Services  
Children's Dental Therapist  
General, Cosmetic  
& Implant Dentistry

Exams for children under 4 free

**9590 9120**

[www.dentalharmony.com.au](http://www.dentalharmony.com.au)

286 Wells Road,  
Aspendale Gardens



dental harmony

17SPV042831F/M/09

## Edithvale Physiotherapy Tried everything? Try us!

Physiotherapy • Massage • Myotherapy • Pilates



**Tel (03) 9772 3322**

285 Nepean Hwy, Edithvale [psmgrou.com.au](http://psmgrou.com.au)



EDITHVALE  
PHYSIOTHERAPY  
CLINIC

## Parent Support group



To help our kids  
with learning  
differences.  
Dyslexia,  
dyscalculia,  
dysgraphia etc

What speechies  
do.



Olivia is  
Director of  
'Gameplan  
Education'  
Speech  
Pathologists

Tickets \$5

Bookings essential from  
[avillia@deakin.edu.au](mailto:avillia@deakin.edu.au)

PD certificates  
issued on request

Weds June 11,  
21 Bay Rd.,  
Sandringham  
7pm-9pm

The connection between oral language and  
literacy.

Kids Like Us Australia Ltd is a registered charity and does not receive any government

funding  
Kids Like Us

## EDITHVALE PRIMARY SCHOOL—CALENDAR—TERM 2, 2014

[illegible]