

# Edithvale Primary School Weekly Newsletter

Education at Edithvale  
Engagement, Excitement, Expertise, Excellence

Edithvale Road, Edithvale, Victoria, 3196  
Telephone: (03) 9772 1393 Fax: (03) 9772 7307  
Email: [edithvps@edithvaleps.vic.edu.au](mailto:edithvps@edithvaleps.vic.edu.au)  
Website: <http://www.edithvaleps.vic.edu.au>

Term 1—Week 8

26 March 2009

## PRINCIPAL'S REPORT

Earlier in the term I mentioned that our school is going through a process of self evaluation and review during 2009. Every four years we go through this process and then develop a strategic plan that will guide our work for the next four years.

The process of school self-evaluation provides an opportunity for our school community to reflect on our achievements, our strengths and areas where improvement is needed. After we have completed our self-evaluation, an external reviewer will work with us to offer independent and expert advice on our progress. With their experience and knowledge of Australian and international best practice they will be able to help identify the most effective strategies for us to continue to improve into the future. The self-evaluation and the review provide a powerful information base from which we can develop our new strategic directions for the four-year school strategic plan.

We will:

- review the school's core purpose and values
- take a 'futures perspective' of the needs of children and young people and the context of our school
- agree on the outcomes we are striving to achieve for our students
- choose the few most important strategies that are critical to our success.

The strategic plan will reflect the community's expectations and the Government's priorities for education and early childhood development. It will be a strategy that is critical to our school's continued success - improving learning, engagement and wellbeing and successful transitions and pathways for our children and young people.

Over the next few weeks your input will be sought and your responses will be of great assistance to us in the development of our future plans.

*Denise Webster*

## Homework Surveys

Thanks to everyone who has returned their homework surveys already and a reminder to others that they are due back tomorrow.

Teaching and Learning Committee.

## IMPORTANT DATES TERM 1—2009

<b>MARCH</b> Friday 27th	Interschool Sport Edithvale Vs St. Louis (away)
<b>APRIL</b> Friday 3rd	Easter Bonnet Parade 9:15am Interschool Sport Edithvale Vs Patterson Lakes (home)  Last Day of Term 1: <b>1:30pm Dismissal</b>

## TERM 2

<b>APRIL</b> Monday 20th	Term 2 Begins
<b>MAY</b> Thursday 14th	Art Show Opening
Monday 18th ~ Friday 22nd	Education Week



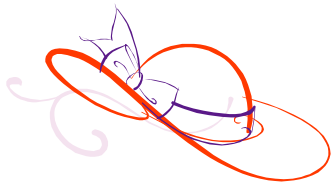


# SHENANIGANS

What a fantastic night it was! Thank you to all the parents who came along with their picnic dinners and joined in the night's dancing with their children. Everyone had a wonderful time and went away exhausted from all the dancing. Here are some pictures that were taken on the night. We hope they bring back some happy memories







# EASTER BONNET PARADE

Our Student Representative Council is organising an activity day to take place on Friday 3<sup>rd</sup> April at 9:15a.m— the last day of term. We would like children to make an Easter bonnet and take part in a parade on that day. The SRC has decided on five categories which are;

EGGIEST    CRAZIEST    AUSSIEST    DECORATIVE    RECYCLED

Prizes will be awarded for the winner in each group, by our team of highly talented judges. The children will then watch the film "The Ant Bully" rated "PG". Please send a note if you do not wish your child/children to watch it. This is to support our Bounce Back Values Program and help develop strategies to protect against bullying. The film is the story of a boy named Lucas Nickle who is being tormented by the local bully. He decides to attack and bully the ant colony in his back yard, out of frustration and a lack of empathy. He is turned into an ant by the members of the colony so he can learn about the effects of bullying and also develop empathy towards others. Once he is full sized again he understands how to stand up to the local bully and inspires other kids to do so including members of the bully's own gang.

Ann McAllen and Phil Jones for the SRC



## ASTRONOMICAL ART SHOW

14<sup>th</sup> – 22<sup>nd</sup> May

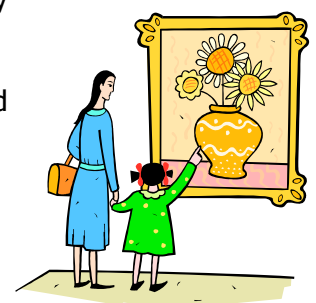
Opening 14<sup>th</sup> May at 6:00pm

We are getting closer to the Art Show and planning is well under way. Ms Lang and the students are busy in the art room, preparing work for the displays. The teachers are busy planning activities for their rooms and are also preparing inspiring works of art to be auctioned. The fundraising group is busy organising a raffle for 4 nights accommodation in Queensland. Tickets will be out shortly.

School community members are planning and preparing art workshops for the children and many other members are helping out by doing posters, media reports, letter drops and preparing for an auction. We are looking for pieces of work to display and if you or any one you know would like to donate a piece of work to be auctioned it can be dropped into the office up to the Friday before the show.

This is a major event for Edithvale Primary School and we are looking forward to you joining us during this astronomical festive time.

Information about tickets for the opening will be in a later newsletter.





## CANTEEN NEWS

Diane  
Canteen Manager

The roster for Term 2 will be sent out this Friday. Parents, if your rostered day does not suit, please contact me so I can organise a replacement.

Next week the Term 2 menu will go out. There will be a couple of items added, (Fantastic Noodles \$2.20 and Hot Chocolate .80c).

Frozen Icy Poles are available till the end of term are :-

Paddle Pops	Paddle Pop Moo
Mini Callippo	Frozen Juice

Thanks to my wonderful helpers this week.

<b>Monday 30th</b> Angie Clark	<b>Thursday 2nd</b> Anne Roberts Jo Mills
<b>Tuesday 31st</b>	<b>Friday 3rd</b> Jackie Houghton Catherine Ashton

## HOT CROSS BUNS

Tracey Griffiths  
Fundraising Committee



Please remember that the money for Hot Cross Buns is due in today, **Thursday 27th March!**

Don't miss out on these yummy, delicious Hot Cross Buns. Hurry and get your orders into the school office tonight



No late orders will be accepted.

Thank you for your support.

TOO SICK TO BE AT SCHOOL?

DON'T FORGET TO LET US KNOW

9772 1393

OR LEAVE A MESSAGE ON OUR  
ANSWERING MACHINE

IT'S COOL TO BE AT SCHOOL



## STUDENT ACCIDENT INSURANCE

Parents and Guardians are advised they are responsible for paying the cost of medical treatment for injured students, as well as transport costs.

Student accident insurance information is available at the office.

## EDUCATION MAINTENANCE ALLOWANCE

Education Maintenance Allowance cheques are now available for collection at the school office.

## UNIFORM SHOP

The Uniform is open every Tuesday from 3:00pm to approx 4:15pm. Order forms are available from the school office to fill out and leave the correct money. The orders will be filled out on the Tuesday and sent along to your child's classroom.

## FIRST AID

### Oral medication for students

A reminder to parents that all prescribed medication should be handed to the First Aid Room in a container clearly labelled, showing the name of the medication, name of the student and dose and time to be given. It will be stored in the First Aid room for the day and can be picked up after the bell goes at 3:30pm.

Please be aware that the First Aid room does not administer Paracetamol, Aspirin, Ibuprofen, etc, unless they are provided by parents with written permission.

This is in accordance with the Department of Education and Early Childhood Development (DEECD) First Aid Policy.

## CHOIR

Choir practice is usually held at 1:30pm every Tuesday in the old computer room at the end of the corridor in the prep area. If you would like to join the choir, please come along.

Mrs Lawrence



## ABSENCES

Thank you to those parents who phone the school when their child is sick and will be away any period of time. The messages are written on our 'phone in absence sheet' and forwarded to the class teacher. This then negates you having to write an absence note.

## NEWSLETTER DISTRIBUTION

Our School Newsletter is produced weekly and distributed on Thursdays. School Newsletters are also available on our website, [www.edithvaleps.vic.edu.au](http://www.edithvaleps.vic.edu.au) and will continue to be online for all families to access.

## PLAYSPORTS TERM 2

The Term Two PlaySports afterschool program for Prep to Year 4s consists of eight weeks of **Fun Footy & Tennis**. Commencing Wednesday 29 April; each session includes warm up games, skill activities and modified competitions, that are fun, engaging and age appropriate. The reduced cost is \$68.00. Enrolment forms accompany this newsletter and spares are at the school office or phone PlaySports on 9532 5584 to enrol now. [www.playsports.com.au](http://www.playsports.com.au).



**O  
M  
E** GUNN TENNIS IS OFFERING 2 GREAT PROGRAMS TO AVOID BEING BORED OVER THE EASTER HOLIDAYS AT LONG BEACH TENNIS CLUB, ROY DORE RESERVE, CARRUM, ENTRANCE OFF DYSON ROAD.

### PROGRAM'S ARE FOLLOWS:

**J  
O  
I  
N** TENNIS HOT SHOTS CHALLENGE 14TH & 15TH APRIL 2009: fun and relaxed round robin match play designed in tandem with the Tennis Australia AVIVA Hot Shots Program. This program is designed in a modified match play format using low pressure balls and smaller courts. Designed as an introduction to competitive tennis for 5-12 year olds. Each competitor will receive a certificate of recognition  
TIME: 2PM TILL 4PM  
COST: \$25.00

**T  
H  
E** TENNIS CLINIC: APRIL 16th, 17th & 18th 2009: spend 3 days training and practicing your skills *fun and games and structured drills for those looking to further their skills or those looking to try tennis for the first time.*  
TIME: 1PM TILL 3PM all 3 days  
COST: \$75.00

**F  
U  
N** ALL EVENTS SUPERVISED AND RUN BY FULLY QUALIFIED TENNIS COACHES ALL WITH CURRENT FIRST AID CERTIFICATES AND WORKING WITH CHILDREN ACCREDITATION

Any further queries or questions can be directed to Greg Gunn (DIRECTOR OF TENNIS) either on 0418-836-647 or e-mail [gunntennis@optusnet.com.au](mailto:gunntennis@optusnet.com.au)

## AFTER SCHOOLCARE

After school care is available in the EPS Hall every day from 3:30pm to 6:15pm. Curriculum days are also available from 7:30am to 6:10pm

For more information please come and see me in the school hall at 3:30pm

Paromita—0439 018 059, or call Kingston Council—Charmaine—9581 4867.

If you would like information regarding Kingston Council Holiday Programs, brochures are at the School Office.

## Aspendale Gardens Community Service Inc

103-105 Kearney Drive  
Aspendale Gardens Vic 3195  
Ph 9587 5955  
Fax 9587 5280  
Email: [agcsinc@bigpond.net.au](mailto:agcsinc@bigpond.net.au)

Why not try something different for 2009. Aspendale Gardens Community Centre is running the following classes and activities. Contact us on 9587 5955 or check out our NEW WEBSITE, [www.agcsinc.org.au](http://www.agcsinc.org.au)

**Tarot for Beginners:** Tuesdays 7.30pm -9.30pm  
Unravel the mystery of the Tarot, learn the meaning of the cards and some common Tarot spreads with our highly intuitive tutor. 10 week course only \$100.00.  
Starts term 2—Ph 9587 5955

**NEW! Numerology Classes:** Wednesdays 7.30-9.30pm.  
Gain an insight into your (and others') life direction, personality and life challenges by using birth names and dates. 10 week course only \$100.00.  
Starts term 2—Ph 9587 5955.

**Social Cards.** Tuesday afternoons at 1.30pm  
Do you enjoy playing cards? Why not come along and meet others in a comfortable and relaxed environment. All levels of skills welcome! Ph 9587 5955

**Yoga is coming** in Term 2  
(Saturdays 10-11am beginning 9<sup>th</sup> May) enquiries contact Belinda on 0433 244 299.



Did you know that the Australian Society of Orthodontists recommends children have their first check-up by a specialist orthodontist at age 7?

Does your child:

- Have crooked teeth or misaligned jaws?
- Have difficulty in chewing or biting?
- Suck their thumb or fingers?
- Grind their teeth?
- Experience speech difficulties?

These may be indicators of an existing or developing orthodontic problem. Take advantage of our **free initial visit** and get some professional advice from a specialist orthodontist today.

- NO REFERRAL NECESSARY -

45 Balcombe Road, Mentone 3194

Phone: 03 9585 8000

Web: [straightorthodontics.com.au](http://straightorthodontics.com.au)