



EDITHVALE PRIMARY SCHOOL

Edithvale Road, Edithvale, Victoria 3196
Phone: (03) 9772 1393 Fax: (03) 9772 7307
Web: www.edithvaleps.vic.edu.au
Email: edithvale.ps@edumail.vic.gov.au

Term 1—Week 8

24 March 2017

Working Together, Aspiring Higher, Connecting with our Community & Doing the Right Thing

PRINCIPAL'S REPORT Mr James Whitla

Exhilarating. Amazing. Proud. Wonderful. Awesome. These are a few of the superlatives that our students and community members have used to describe last week's Fair. It was an unqualified success made possible by the generosity of our incredibly supportive School Community.

Thank you to all who donated their time, effort and energy to provide such an exciting experience for our families. The spirit and culture of our school is truly great and I am exceptionally grateful, and proud of our school.

Academic Successes!

At our Annual General Meeting on Tuesday night I tabled our 'Annual Report to the School Community' which outlined the successes and achievements that we, as a school, experienced last year. One success that I was thrilled to share with our community is that, based on DET data sets that focus on student growth between years AND looks at the number of students working well above their expected levels in Literacy- we are considered to be a HIGH PERFORMING SCHOOL!

This is a reflection of the committed and talented teaching staff that we have and the passion and enthusiasm with which they teach. Each and every day students are motivated to learn in a stimulating learning environment and our academic results are trending positively.

Student Self-Reflection

We know from research that reflection helps students to not only remember but also to actively participate in their learning experiences. Reflection helps to make connections between new learning and previous experiences. It can help students to work out what knowledge and skill acquisition they need to focus on next.

This term our students have self-evaluated their performances and reflected on the work they have completed. Teachers have conferenced and discussed these evaluations with your child to rate their performance against the descriptors. The self-reflections and evaluation not only help students acknowledge their achievements and effort, they also help to set future learning goals and targets and these will be sent home on Monday. Please keep an eye out for these and take some time to unpack your child's reflection with them. Their astute observations make for great reading 😊

Peer review

This year we have a wonderful opportunity to reflect on our achievements and successes and identify some future needs and any areas for improvement to help us be a truly great school.

In 2017 we take stock of our current Strategic plan (2014-2017) through the formal process of a Peer review. Peer reviews draw on the expertise and experience of professionals to support schools to evaluate their performance outcomes and practice, and to plan for improved student outcomes. A key to this work is gathering the thoughts and ideas of all members of our school community- our students, parents and staff. We are eager to receive your feedback as part of our self-evaluation as it will help us to identify what is working well, what needs to continue and which areas of the school's work may need to be improved or further developed.

I encourage you to take the opportunity to provide feedback and help us set the direction of the school for the next four years by reflecting on these questions over the coming weeks

What do you perceive our school's strengths to be?

What do you consider to be some of our achievements in the last four years?

If you think about our school and its future needs, what springs to mind?

As this is the final newsletter of the term, I'd like to take the opportunity to wish all of our students and their families a happy and safe holiday break. We will look forward to seeing everyone back at school on Tuesday April 18 after the Easter long weekend.



SCHOOL COUNCIL PRESIDENT'S REPORT Mr Steve Smith

Our Twilight Fair was only last Friday and there's still quite a buzz at the school. It seems to be unanimous that the event was a great success and it was really wonderful to see so many children and their families having so much fun. The event was very well attended both by the school community and by an impressive number from the wider community. Thank you for coming out to support our school!

We hope you had a wonderful time.

On behalf of Edithvale Primary School we would like to thank the parents, students, teachers and staff that helped out on the night; from organising and assisting at the stalls, setup and pack up, baking cakes or making items for the stalls, donating or sourcing items and lending equipment. We have such a fantastic school community and it really shows when you have such dedicated volunteers. Thank you.

A special thanks to all our sponsors, supporters, entertainers, vendors, and local clubs that donated prizes and their time to our event. Your support is very much appreciated by the Edithvale Primary School.

And finally, we are very happy to announce that \$21,700 was raised for our school! This is a great start towards our Master School Plan.

A huge thank you to everyone involved.

On Tuesday this week School Council met for our AGM, to review the Annual Report. Later in the evening we had our first School Council meeting of 2017. We said farewell to several councillors including Kathy Barratt, Darryl Collins, Catherine Grimwade and Kim Murphy. We appreciate all the contributions they have made over the past two years. We also welcomed new members to the School Council: Breeana Ryan, Alison Read, Leah Wheatley as parent members and Dinelle Bates as our new DET member.

During the evening we had our election of office bearers for 2017. I have accepted the role of President and I look forward to another great year serving on School Council. The role of Vice President was accepted by Nicole Butcher. The role of Minute Secretary was accepted by Jacqui Miller. The role of Correspondence Secretary was accepted by Jodi Vuat.

We have formed the following sub-committees this year - Finance, Buildings and Grounds, Fundraising (Events), Fundraising (Grants), Education & Policy, and Canteen. If you are interested in being involved in any of the sub-committees, please come and see me or leave a note for me at the office.

Our next School Council meeting is scheduled for Tuesday 9 May.


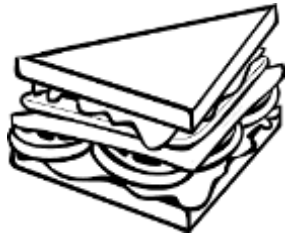
MATHS CORNER

This week's Math's corner activity is for the Years 2, 3 & 4.

- 1 - What is the price of the apple?
- 2 - Sue needs to buy 16 hats for a party. How many packets does she need to buy?

Don't forget to come and see Miss Laver or Madame Snow for your chance at a lucky dip prize! (the winner overall will get a free crepe/pancake on the French Day 16 August) so be quick and Good luck team!

Lucy buys an apple and a sandwich for lunch.

	
?	\$ 1.90

She pays with a \$5.00 note and gets back \$2.00 change.

How much does the apple cost? \$ _____

- 2 - Sue needs to buy 16 hats for a party. The hats are sold in packets of 5. How many packets does she need to buy?

3 4 21 80



All Fired Up

26 March 2017

hockingstuart

All Fired Up Fun Run

Online Registrations Now Open

5km, 10km & 15km Events

Early Bird Specials

Register online: www.allfiredupfunrun.com.au

EPS FAIR 2017



The students of year 4 focused on gratitude for wellbeing this week. We focused on being grateful for people in our community and what they do for us or what they do to help us. Many of the students wrote letters to their sports coaches to thank them for teaching skills or giving up their time to coach. Some students decided to thank our school council, our fair committee and our parent helpers for the awesome work they put in to make our twilight fair so much fun! Here are some of the letters they wrote:

School Council Team

Thank you for the amazing fair! It must be a lot of hard work to organize the fair with rides like the cyclone and the fun slide. The tasty food and all the soft drink. Again thank you for all your hard work!!! Felix M

Dear All the parents who helped at the fair, Thank you for helping at the fair and setting up everything like the rides, stalls and the stage. From Harrison G.

Dear Fair Committee, Thank you for helping set up the fair. If it wasn't for you and everyone we would not of had the fair. Hopefully you had fun doing it and hopefully you had fun at the fair. So here's a last big thanks. From Sofia.



Dear Mum, I am sending you a postcard because at school we are learning about gratitude and I wanted to show you how I much appreciate you helping at the fair. There wouldn't be any stalls at the fair without you or the school council. Thank you for taking me to the fair also. I appreciate everything you do for me. Thank you. Hana



Dear Parent Helpers,
Thank you so much for volunteering in the E.P.S fair. We couldn't do it without you! There wouldn't have even been a cake stall or rides without generous helpers like you. I'm looking forward to the next fair. Wilson T.



Dear Monica, I am sending you a letter from Edithvale Primary School. Thank you very, very much for running 4A's stall (Pluck a Duck). We are very grateful for all your hard work. We look forward to the next Pluck a Duck. From Ryan H



CANTEEN Mrs Diane Cameron

First, many thanks to Parents who have changed their child's class details on Qkr, there are still a couple who haven't yet and a note will go home soon.

Secondly, our next Sushi Day will be on Tuesday 28 March. Orders via Qkr closed on Thursday 23 March. For those who missed this cut-off date, please see me at the canteen first thing Monday morning, and I will accept cash orders only. Our next Sushi Day in Term 2 will be Tuesday 30 May.

Thirdly, 2nd Term roster is being completed at the moment and will be sent out next week. We will have many new faces helping out in the Canteen next term along with our more experienced ones. Thank you to all that helped out this term, it takes a little while getting back into the routine and remembering the new prices, overall we all did pretty well.

A BIG THANKS to Kate, Tracey and Tarsha for helping out on the day of the fair, I reckon half the school ordered a lunch order on Friday 17 March. We made 6 large and 32 small fresh fruit salads, 12 sandwiches/rolls, 10 wraps, 16 schnitzel rolls, 6 toasted sandwiches/wraps, along with 53 hot dogs as well as other menu items. It was a HUGE DAY for everyone.

Term 2 menu will be available next term. There will be Hot Chocolates added to menu and a change in the meal deal.

SAFETY ISSUES

Please remember that French Avenue traffic becomes ONE WAY, entry from Edithvale Road only, from 8am until 9.30am and again at 2.30pm until 4pm. For the safety of all our students, families and visitors to our school PLEASE OBSERVE THESE CONDITIONS.

Every so often Kingston council send someone out to monitor the situation and fine those not obeying the restrictions. They have been spotted in the area recently!

The staff carpark is for the use of staff only. Please do not use this area to pick up or drop your child/ren to/from school.

The pedestrian crossings, on Edithvale Road and in Fraser Avenue, are there for the safety of all our students and families. Please do not cross a few metres down the road. Please walk the extra steps and cross in safety with Norm or Margaret.

CANTEEN ROSTER			
Mon 27	Tue 28	Thu 30	Fri 31
Shauna McMillin	Claire Stewart SUSHI DAY	Jill Donnelly Bernadette Lydster	Dana Page Nicole Butcher
Mon 18	Tue 19	Thu 21	Fri 22
Easter Monday	Elisha Singh	Holly Smith	Dana Page Sam Davies

School Banking Information Session.

CHELSEA BRANCH is excited to offer the Commonwealth Bank School Banking program to all students.

School Banking is a fun, interactive and engaging way for young Australians to learn about money and develop good savings habits. Children who deposit money into their Youthsaver account through School Banking earn Dollarsmites tokens, which they can save up and redeem for exciting rewards.

The rewards available during 2017 are:

- Cyber Handball
- Colour Change Markers
- 3D Chalk Set
- Tablet Case
- Smiley Emoji Keyring
- Volt Handball
- Pencil + Tech Case
- Epic Earphones



School Banking is also a great fundraiser for our school. Our school receives \$5 when a student makes their first ever School Banking deposit and 5% on every deposit made through the school (to a maximum of \$10 per individual deposit).

School Banking day is **TUESDAY**. Each week you need to **hand your bank book to your teacher**!

We will be holding a School Banking Information Session at **THE CHELSEA BRANCH**

Time: 10AM – 3.30PM

Date: TUESDAY 4TH APRIL (DURING SCHOOL HOLIDAYS)

Location: COMMONWEALTH BANK CHELSEA, 412 NEPERAN HIGHWAY, CHELSEA

Please join us and find out more about the School Banking program and how your child can get involved.

If you are interested in opening a Commonwealth Bank Youthsaver account for your child you can visit commbank.com.au/schoolbanking and click on the link to open a Youthsaver account. A School Banking representative will be available at the Information Session to show you how you can do this. In order to verify yourself and your child, you will need your driver's licence and your child's birth certificate, but if you don't have these with you on the day, you can complete verification online at home.

POP-UP ART EVENT

OFFICIAL PROGRAMME

Saturday 25th March 2017

10am: EVENT OPENS

WETLAND ROOM - Permessio Collective

TAKE PART IN A PUBLIC MURAL - The team at Permessio collective will offer passersby's an opportunity to access their inherent creativity, and through a process of meditation and intuitive painting, participants are invited to paint on a large mural canvas.

Ages: 16+ open from 10am - 2pm.

CHILD CARE ROOM - Matchbox art with Anne

With guidance, creativity and time you will immerse yourself in transforming a matchbox into a beautiful piece of art for you to take home. Not to be missed!

Ages: all welcome - operating from 10am - 2pm.

MAIN HALL - Nanni face painting

Krisen as one of Melbourne's most creative face painters,

Joanne will be ready to create amazing art on all the kids' faces! This will be a popular stand so book your spot and as you wait get creative with Carla or dance to the beat of the African drums!

Ages: all welcome - operating from 10am - 2pm.

MAIN HALL - Kids art with Carla

KIDS PUBLIC MURAL of love, community & compassion. Kids will have fun with Carla as she inspires all kids to get creative. Colourful paper, textures, shapes, glue sticks & more - this kids will love this space, as they create a very special symbols with this paper art-craft.

Ages: all welcome - operating from 10am - 2pm.

MAIN HALL - African Drumming workshop

This will be a fun and accessible activity that captivates everyone regardless of age or gender. There will be a range of drums and shakers out which will encourage people to play! It's a really fun format for high energy - don't miss this!

Ages: all welcome - operating from 10am - 1pm.

2pm: EVENT CLOSES

COFFEE & SNACKS AVAILABLE FOR PURCHASE.....

We welcome you to take a break & recharge in our beautiful picnic surrounds.



CHELSEA HEIGHTS COMMUNITY CENTRE

160 THAMES PROM CHELSEA HEIGHTS

PH: 9772 3391



event sponsor

AREASPECIALIST

www.chelseahighscommunitycentre.com.au



GO! FITNESS

Get Your Fitness Goals Going at GO! FITNESS!

Purchase a 30 Day Premium Membership Trial and go in the Draw for a \$1000 Fitness Package!

gofitnessparkdale.com.au 361 Nepean Highway Parkdale 9587 9999

Edithvale Physiotherapy Tried everything? Try us!

Physiotherapy • Massage • Myotherapy • Pilates



Tel (03) 9772 3322

285 Nepean Hwy, Edithvale psmgroup.com.au





Gentle and Caring Services
Children's Dental Therapist
General, Cosmetic & Implant Dentistry
Exams for children under 4 free

9590 9120
www.dentalharmony.com.au
286 Wells Road,
Aspendale Gardens

dental harmony

1500000000000000

LIMELIGHT DRAMA SCHOOL



STARTING TERM 2
THURSDAY LUNCHTIMES
FOR YEARS 2-6

LIMELIGHT CLASSES ARE IN YOUR SCHOOL!

Limelight Drama is more than just an extra curricular activity; The program is designed by qualified teachers and professional performers; it lifts confidence, aids social skills, builds empathy and also refers the aspiring performer to professional work in Film, Tv, Theatre and Musicals. Our students have appeared in Tangle, Neighbours and films such as Where the Wild Things are and Jyндabyne.

Skills for life

- Limelight students work to a performance every term.
- Term classes for performance skills and confidence.
- School Holiday Workshops in Richmond and Thornbury. Stay 9-5pm, half a day or 1 or 2 days out of 5.
- Kinder Programs.



Call now for a free trial class Ph: 0407 537 305

CHELSEA
dental

THE GREAT Deals!

\$149 CHECK-UP
CLEAN AND FLUORIDE

NO GAP CHECK AND CLEAN
FOR CHILDREN 18 YEARS & UNDER

CHILD DENTAL BENEFIT SCHEME
ACCEPTED

MOUTH GUARD
(SPECIAL FOR \$120 ANY COLOR)

** The above offer is valid until 31 May 2017.

BOOK TODAY
TO RECEIVE THESE GREAT DEALS!

03 8774 0441

GENERAL COSMETIC DENTISTRY & IMPLANTS

Cucina Dolce

— CAFÉ - PIZZERIA - RISTORANTE —

\$5 OFF
YOUR ORDER*

ENTER CODE
50OFF
@ CHECKOUT

ORDER ONLINE @
CUCINADOLCE.COM.AU

9 7 7 2 9 0 9 1

SHOP 8/426 NEPEAN HWY, CHELSEA
INSIDE CHELSEA BEACH ARCADE

*FROM ORDER \$30. ONLINE ONLY & OFFICIAL WEBSITE

St Brigid's and
St Louis de Montfort's
Parishes

Fantastic Festival



**Sunday 26th March
12 to 5pm**

**St Louis de Montfort's School
37 Dolphin Street, Aspendale**

Develop the confidence of a winning smile

Crooked teeth? Bad bite? Get professional
advice from a specialist orthodontist today.

Free initial visit. No referral needed.



straight orthodontics
health | harmony | confidence

**MENTONE
FRANKSTON** 9585 8000

Aspendale Gardens Community Centre

April School Holiday Fun

Superhero Fun!!



Wednesday, 5th April | 10.00am to 11.00am

Upon entering the school, trainees choose their superhero name
and power. They will then be put through their paces, learning
essential skills such as agility, x-ray vision, tying up villains
and rescuing civilians!

Activities are designed to exercise both the kids' bodies and
imagination, and include an obstacle course, egg and spoon race and
tying teacher-villains to the chair.

At the end of training, each trainee will graduate as a
True Superhero!

\$15.00 per child
Suitable for 4-11 year olds
Bookings Essential
<http://www.trybooking.com/265021>

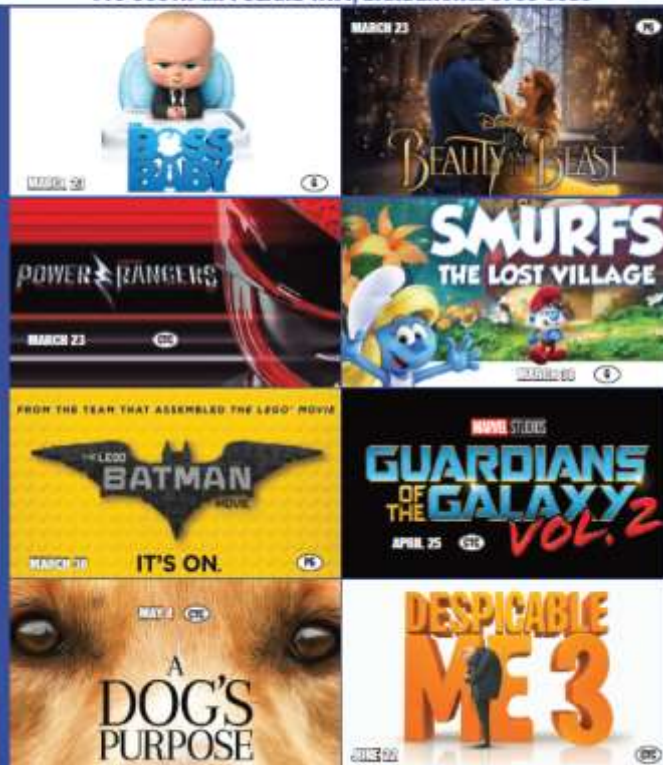


Aspendale Gardens Community Centre
103-105 Kearney Drive
Aspendale Gardens
Tel: 9587 5955
Email: enquiries@agcvcinc.org.au




Lunar Drive In

115 SOUTH GIPPSLAND HWY, DANDENONG. 9706 9988



SESSIONS AT WWW.LUNARDRIVEIN.COM.AU

Information correct at time of printing. All dates and films are subject to change.



Come & Try Baseball

AGES 4 & UP

Get the kids down to the Chelsea Baseball Club this month for 2 great sessions, perfect for kids who've never played before!

TUESDAY MARCH 21 – 5-6:30PM
TUESDAY MARCH 28 – 5-6:30PM
TUESDAY APRIL 4 – 5-6:30PM

FOR MORE INFORMATION ABOUT HOW YOUR CHILD CAN BE INVOLVED
 CALL TREVOR JOHANSEN 0450 784 728
 EMAIL INFO@CHELSEABASEBALLCLUB.COM.AU
 150 EDITHVALE ROAD, EDITHVALE



Melbourne EASTER SHOW

14 - 17 April 2017

FREE ENTRY



LAWSON POOLE RESERVE, CRANBOURNE
WWW.MELBOURNEEASTERSHOW.COM.AU

Sponsored by 

Edithvale

Pre School Centre Association Inc

Come for a visit and see what over 60 year of experience in providing community based quality early childhood education looks like. Bring the kids for a play and speak with our educators and committee to see if you would like to become part of this inclusive and welcoming community in 2018!

OPEN DAY

Saturday 29th April, 2 - 4pm

29 Fraser Avenue, Edithvale (03) 9772 3136
edithvale@ecms.org.au

Messy Play

Baby Chicks

Mud Kitchen

Meet the Teachers

Popcorn

Face Painting

3yo & 4yo Programs

Fairy Garden





Meet and greet the teaching team

Explore the Learning Space

The team of dedicated and friendly teachers at Aspendale Gardens Preschool are committed to working in partnership with families and children. The teachers believe learning and development is stimulated through play-based learning experiences. This is supported through intentional teaching, spontaneous teaching moments and child initiated activities.

**MONDAY 27TH
MARCH
4PM-6PM**

ASPENDALE GARDENS PRESCHOOL OPEN AFTERNOON




Aspendale Gardens Preschool
 103 - 105 Keirney Drive,
 Aspendale Gardens VIC 3195
 Ph: 03 9587 5955
 Ph: 03 9587 6060
 Enrolment Enquiries:
kim.fulton@agcsinc.org.au
natasha.burns@agcsinc.org.au
 W: www.agcsinc.org.au

EDITHVALE PRIMARY SCHOOL—CALENDAR—TERM 1, 2017

[illegible]

EDITHVALE PRIMARY SCHOOL—CALENDAR—TERM 2, 2017

[illegible]