



EDITHVALE PRIMARY SCHOOL

FORTNIGHTLY NEWSLETTER

Edithvale Road, Edithvale, Victoria 3196
Phone: (03) 9772 1393 Fax: (03) 9772 7307
Web: www.edithvaleps.vic.edu.au

Term 1—Week 7

13 March 2020

Working Together, Aspiring Higher, Connecting with our Community & Doing the Right Thing

PRINCIPAL'S REPORT Mr James Whitla

We are now one sixth of the way through the school year and almost at the end of a very fruitful and rewarding Term 1.

On Friday our staff joined with teachers from a number of our Network Schools to hear from George Booker on strategies we can use to develop students' number fluency and how we can eliminate mathematics misconceptions through excellent teaching practices. Much of George's work is already in place at Edithvale and it was a great opportunity to revise his work and embed our understanding of it.

Student Attendance - It is important for all students to be at school every day.

There is a direct link between attendance and achievement. In 2019 the average number of days absent per student at our school was 16.1. This is more than THREE full weeks of schooling.

If students miss the basic skills in the early years of schooling they often experience learning difficulties later on. Children need to attend school regularly to make the most of the educational opportunities available to them.

It has been shown that poor patterns of attendance in the early years can lead to poor patterns of attendance throughout the school years.

Poor attendance makes it difficult for students to form positive friendships with their peers.

An 80% attendance rate is the equivalent of missing	An 85% attendance rate is the equivalent of	A 90% attendance rate is the equivalent of	A 95% attendance rate is the equivalent of
<ul style="list-style-type: none">•1 day per week OR•40 days per year OR•Over 2/12 years of school from Prep-Year 12	<ul style="list-style-type: none">•30 days per year•2 years of school from Prep- Year 12	<ul style="list-style-type: none">•1 day per fortnight OR•20 days per year OR•Over 1 year of school from Prep-Year12	<ul style="list-style-type: none">•10 days per year•Over half a year of school from Prep-Year 12

School Council - Last week we held our School Council election. It was great to have more nominations than places available and confirms what a wonderfully supportive and engaged parent community we have at Edithvale Primary School and I declare the following as duly elected.

Parent Members: Nikki Brown, Mark Eddey, Laura Moore and Mike Smits

DET Members: Jacqui Miller and Luke McMaster

A warm 'welcome back' to the returning members of council- Lisa Carter, Kate Middleton, Bree Ryan and Steve Smith.

Our new School Council meet for the first time on Tuesday 17 March at 7.00pm straight after our AGM.

Child Safe Standards - Our school takes strong account of and makes every effort to accommodate the diversity of all children in implementing the Child Safe Standards. Child safety is discussed as part of our Wellbeing programs and it is embedded in our organisational culture. Child safety is a regular agenda item at staff meetings and school council meetings. We have recently updated the following policies, all of which are available on our school's website.

Child Safety
Child Safety Code of Conduct and
Child Safety Reporting Obligations



Progress Reports - We are trialling progressive reporting in 2020 to give more frequent and timely feedback to students and parents. Our first Progress Reports will be available from 4pm on Friday 13 March through COMPASS.

These reports provide a point in time description of student achievement, progress and growth in their first 6 weeks of the school year measured against a limited number of learning areas.

More detailed reports will be available at the end of each semester.

Emergency Management - Next week as part of our Emergency Management Procedures at Edithvale PS we will be undertaking an 'On-Site evacuation'. Our staff and students participate in these drills every year to help develop safe habits should a real life emergency at school occur.

Coronavirus Update - On Tuesday, the Premier, Minister for Health and Victorian Chief Health Officer announced that preparations are well underway to manage the growing risk of an emerging COVID-19 pandemic outbreak in Victoria.

Victoria is well-prepared to deal with an outbreak, and the Department of Education and Training is working closely with the Department of Health and Human Services (DHHS) to plan for and respond to the likely impact on our schools.

School closures - School closures will be made on the recommendation Victoria's Chief Health Officer. Once this occurs, DHHS will inform DET, and we will then work with the school to implement the closure.

SCHOOL COUNCIL PRESIDENT'S REPORT

Mr Steve Smith

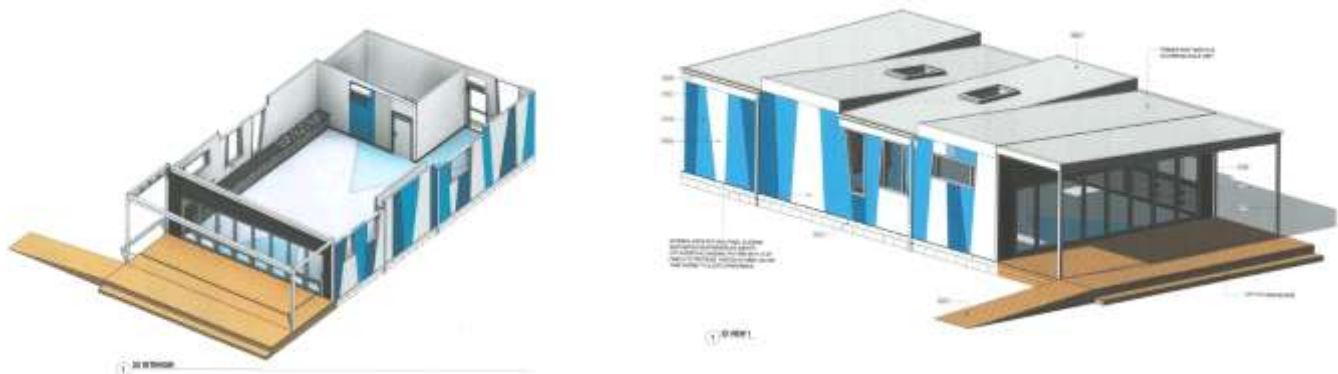
Elections for our School Council parent members have concluded. Congratulations and welcome to our newest members Nicole Brown and Laura Moore. And welcome back to Mark Eddey and Michael Smits. I would also like to welcome our Department of Education and Training (DET) members - Luke McMaster and Jacqui Miller. The following is a complete list of the EPS School Council for 2020.

EPS School Council 2020

DET Members	Hayden Callahan	Parent Members	Nicole Brown	Laura Moore
	Luke McMaster		Lisa Carter	Breearna Ryan
	Jacqui Miller		Mark Eddey	Steve Smith
	James Whittle		Kate Middleton	Michael Smits

Our next School Council meeting will be our Annual General Meeting (AGM) on Tuesday 17 March. The AGM is a great chance to reflect on the year just past. 2019 was certainly a big year with the Twilight Fair, Christmas Market, and construction of our new STEM facility. EPS also received state funding for a new Art Room, a Sensory Garden, and an additional grant for an Indigenous Garden. These projects are in various stages and will be discussed as part of the plan for 2020 and the future. The AGM is also when we will welcome our new school council members, and farewell our school council members that are leaving.

Over the next few weeks we will start to see our new **Art Room** take shape. This *permanent modular building* will be built mostly off-site and then transported to the school to be assembled. This reduces the length of the disruption at the school. The site is now prepared to accept the delivery of the building and we expect the installation to begin this month, with the scheduled completion for the end of May. Edithvale PS was fortunate to receive funding for this project in the 2019 budget of the State Government.



AUTUMN HOLIDAY FUN!



Term 1:	Important Dates	REMINDER: SUSHI DAY Tuesday 24 March 2020 Orders due by Thursday 19 March. Pay by QKR or see Diane in the canteen. NO other lunch orders on this day
17 March	Year 1 Craftpower Incursion	
18 March	Year 1 Craftpower Incursion	
24 March	Sushi Day	
25 March	Inflatables Multi Sports Day	
27 March	Last Day Term 1. 2.30pm Finish	

CANTEEN ROSTER							
Mon 16	Tue 17	Thu 19	Fri 20	Mon 23	Tues 24	Thurs 26	Fri 27
Serena Thomas	Melissa Heath	Kate Gibbon Catherine Pietrzak	Nicole Butcher	Lisa Saint-Aubin	Sushi Day	Holly Smith	Jodi Vuat Fleur Eddey