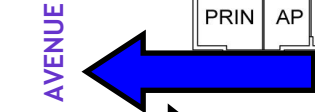
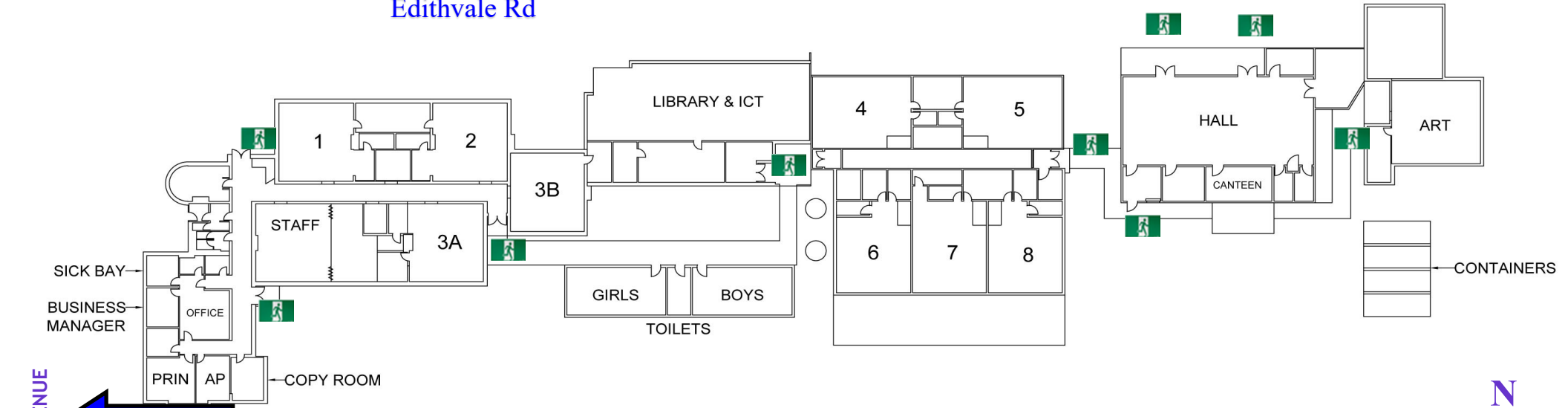


Edithvale Rd



Year 3s
 Entry from 8:30 am
 Exit from 3:10 pm

This map shows entry/exit points for Year 3 students

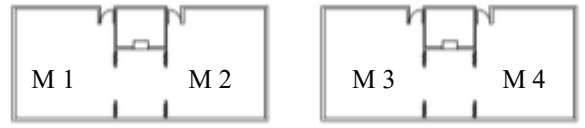
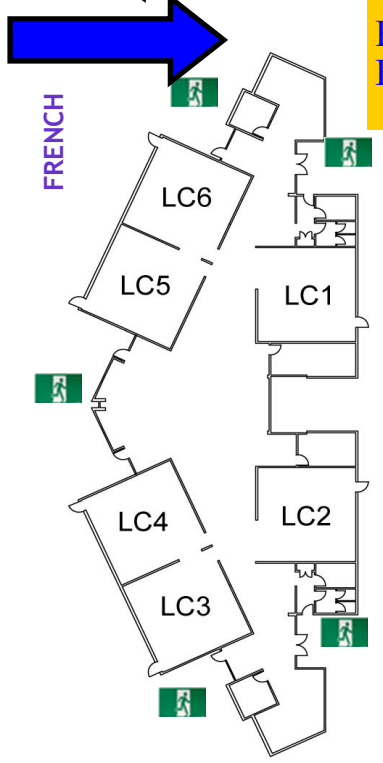
Gates will be unlocked at 8:30am

Students will be escorted into the classroom by 8:45am

All students will line up and enter their classrooms through their regular door.

Students will be escorted to their collection points at the times indicated.

With limited space round the school perimeter we ask that all families continue to practise social distancing and help our community stay safe.



Mod 5—installed 2018

HAIG AVENUE GATES