

Welcome to Year One in 2021!

Welcome back to what will be a fantastic year at Edithvale Primary School. Our team for 2021 is Kerri Harridge (1A), Amy Cain (1B), Claire Leach (Monday to Wednesday), Cat Grimwade (Thursday and Friday) (1C) and Craig Heywood (1D). We are looking forward to a fun and productive year with creative and enthusiastic students. Being in Year One will be a very exciting and busy time for your child and we can't wait to see them thrive and develop throughout the year. Each teacher has high expectations and will expect your child to do their best at all times.

Of particular importance is for students to:

- show care, concern and respect for others both inside and outside the classroom
- demonstrate curiosity and a strong desire to learn, contribute and share with others
- have a growth mindset believing they can achieve by working hard and putting effort into every task

miStAkEs
are proof
that you are
TRYING

Below is an overview of our structures and programs that aims to help inform you of what and how we teach. If you'd like to find out more about any of these programs or would like to have a quick chat we are available every day after school (except Tuesdays). If a more formal discussion is needed, please speak to your child's teacher and we will arrange a time. We look forward to building strong partnerships through open communication with you.

ENGLISH

Reading

The key aspects of our reading program are building student's accuracy, fluency, comprehension and expanding their vocabulary. All students will be encouraged to use Phonemic Awareness strategies to decode unfamiliar words in texts. They will be assigned reading material specific to their developing skills. Students will explore a variety of text types which will include both fiction and non-fiction with many related to our PBIL focus: Toys.

Spelling



Phonics and Phonemic Awareness are a major focus in Literacy at Edithvale. A new structure that will commence this year is a daily practice of Phonics. Students in each classroom across the school will spend the first 20 minutes of each day practicing sounds of the Alphabetic code through the use of Orton and Gillingham sound cards. Additionally, students will be learning Phonemic Awareness strategies to assist with decoding skills. Daily literacy sessions will focus on identifying, reading and writing graphs (1 letter which represents 1 sound eg. s), digraphs (2 letters which represent 1 sound eg. ch) and learning about the basic morphology of words such as root words and suffixes.

Writing

We will provide many opportunities for students to talk and plan before writing. Our focus will be on creating well formed sentences featuring spaces between words and the use of a capital letter at the start and sentence ending punctuation at the end. Students will gain experience in understanding the difference between a sentence fragment, an unfinished sentence, and a full sentence. Students will be involved in hands-on tasks including unjumbling sentences and adding to sentence starters.

Mathematics

All teachers at Edithvale Primary follow the 'Booker' Sequence for teaching Maths. This developmental sequence is used for teaching all place value/number skills and the four processes: addition, subtraction, multiplication and division. The purpose is to help students have a strong understanding of number concepts. The following topics will be covered this term:

- counting patterns i.e. counting by 1s, 10s, 5s and 2s to 100 with special emphasis on counting by 1s and 10s.
- place value: reading, writing and ordering numbers to 100
- using a calendar to locate certain dates and information and naming and ordering seasons and months in a year.

- finding data from a graph such as what has the most, least and how many are there in each part of the graph


Students will be involved in a range of hands-on activities using concrete materials such as number charts, counters, math games, blocks and base-ten materials to reinforce learning.

Essential Assessment - Sunset Maths


Essential Assessment is an online platform that can be used by students to assist them to continue to develop from their current understanding in relation to the Maths curriculum. Later this term, students will receive a login for Essential Assessment, there they can access 'My Numeracy' and 'Sunset Maths.' Sunset Maths will be replacing the previously used Mangahigh program.

My Numeracy™ & My Literacy®


Students are able to complete their My Numeracy™ and My Literacy® activities which have been set up based upon the concepts that have been misunderstood in their pre-assessment and they are available for use within each sub-strand. The message board will assist the student to determine which activities need to be completed by which date.



MY NUMERACY




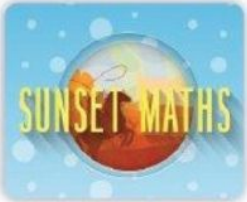
MY LITERACY



Sunset Maths

Sunset Maths is an application aimed at developing the student's mental maths skills. This is available through the games icon and sets up based upon the student's pre-assessment results. The student will work through curriculum aligned content to develop their knowledge in each operator in alignment with their learning.





Digital Technologies (ICT)

Throughout the year, our students will participate in lessons on cyber safety and being cyber smart citizens. Recently, each Year 1 class participated in a detailed discussion around the safe and appropriate use of technologies. The ICT - Acceptable User Agreement was sent home for further discussion. Thanks so much for discussing this with your child and returning signed, if you are yet to do so we look forward to receiving yours at your earliest convenience. Each class will use our school iPads to support their learning across all curriculum areas.

Project Based Inquiry Focus

What is PBIL?

Project Based Inquiry Learning is our Whole-School approach to exploring key ideas across the Victorian Curriculum in a different and engaging way. Each project is authentic and has a real world-context where students are collaborating, creating, researching and designing in order to answer their **big question** posed at the beginning of their unit. A key feature of this approach to learning is that it is driven by student voice and choice in the way that they design a product, how they work and how they use their time. How this looks differs as students' progress through the year levels ([see Types of student inquiry image >>](#)). Each unit of inquiry culminates in a public product where students are able to showcase their learning to those beyond the classroom.

Why PBIL you might ask?

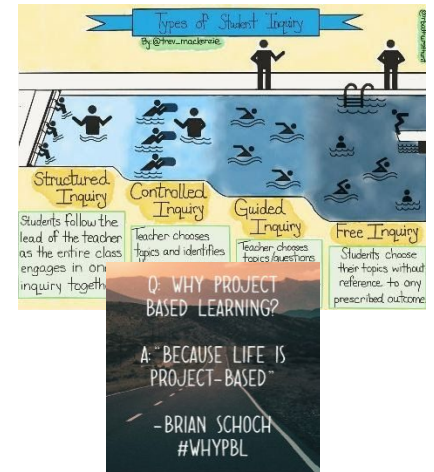
“Project-based learning experiences give students opportunities that they would never have in school otherwise.” (Juliani, 2018)

What does PBIL look like in Year 1 this term?

Our big question is..... ‘What makes toys popular?’

We will be exploring the key ideas around-:

- how toys move and what forces are used to move them
- how they have changed over time
- how do the toys from our parents / grandparents differ from ours
- what makes an exciting or interesting toy? Why?



Specialist Learning Timetable

This year we have four specialist subjects - Art, French, PE and science. Below is a timetable for each class:

	ART	FRENCH	PE	SCIENCE
1A	Wednesday	Tuesday	Tuesday	Wednesday
1B	Wednesday	Wednesday	Tuesday	Tuesday
1C	Tuesday	Thursday	Wednesday	Tuesday
1D	Tuesday	Tuesday	Wednesday	Wednesday

Science

This year classes across the whole school will enjoy a 50 minute specialised Science lesson each week. These sessions will take place in the newly constructed science room and be an exciting addition to the learning done at our school. The 4 key domains of science; Physical, Chemical, Biological and Earth and Space will be covered throughout the year and provide students with classroom learning that assists them in understanding their world around them. This term students will enjoy a unit of work on Physical Sciences where they will develop understanding through a variety of hands on experiences and collaborative opportunities. The key learning for students this term will be around different forces and the ways in which energy can be produced.

Physical Education

The Physical Education program provides students with opportunities to develop knowledge, understanding and skills for students to lead healthy, safe and active lives. This term students in grade one will participate in a variety of activities and games to further develop their fundamental movement skills such as running, hopping, jumping, skipping, leaping, catching and throwing. Students will use a variety of equipment to develop cooperative behaviour and confidence in a range of exciting and meaningful experiences.

French

The French program will continue to scaffold on the students’ learning of language and culture. Students in Year 1 have begun to use and respond to the French language. Oral language is developed through listening to the sounds, shapes

and patterns of French through activities such as rhymes, songs, clapping, action games, imitation and repetition of sounds modelled by the teacher and oral texts.

Art

The Visual Arts program aims to provide for and nurture student learning through a variety of sequential activities that develop fine motor skills, and link to learning in the classroom where possible. In year 1 students build on their experience with using the art elements of line, colour and shape. They explore a variety of materials and techniques. Students are encouraged to respond and reflect on their own artwork and the artwork of others.

Wellbeing

The wellbeing of our students is really important as we seek to have happy, healthy and active kids at EPS. This year throughout the school we will have a dedicated Wellbeing time each afternoon with teachers using a variety of resources to support the mental, physical, social and emotional wellbeing of our students. Teachers will employ a range of strategies including circle time and restorative practice discussions in addition to our key programs which include:

- The Resilience Project focusing on gratitude, empathy, mindfulness (G.E.M) and ways to practice these in everyday life with emotional literacy included to promote positive mental health
- Resilience, Rights and Respectful Relationships to develop social, emotional and positive relationship skills
- The Zones of Regulation guiding students in becoming more aware of and independent in controlling their impulses, sensory needs and improving their conflict resolution skills

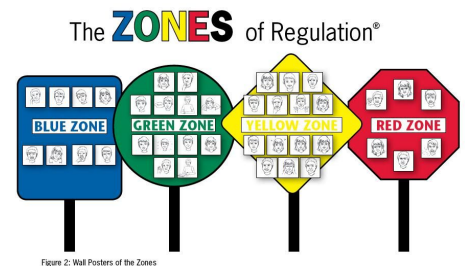
A student's wellbeing affects every aspect of their time at school and as such teachers will be responsive to the needs and issues affecting their individual classes when deciding on which wellbeing activities to employ each day.

Some useful links and further information are listed below;

<https://theresilienceproject.com.au/>

<https://fuse.education.vic.gov.au/ResourcePackage/ByPin?pin=2JZX4R>

<https://www.zonesofregulation.com/learn-more-about-the-zones.html>



Home Learning

We encourage you to read with your child each night. Shortly we will commence sending home appropriate texts for your child. Reading interesting texts together (fiction and nonfiction), talking about new vocabulary, discussing what is happening and focusing on discovering new facts or exploring interesting stories is a fantastic way to help your child build their skills as a reader also.

Seesaw

As a school, we will continue using Seesaw in 2021. Your child will receive a new login/ QR code shortly to give them access to their new learning space for their current class. This space will be used to create a portfolio of the students reflections throughout the year and for home learning activities. Extra support or extension activities will also be sent for those students who we think would benefit from it. We look forward to using this space as a great way to share your child's successes throughout the year and give you, the parent, some extra insight on how we teach certain skills, so you can best assist your child if needed.

Housekeeping

Please ensure your child brings their purple pocket each day. Also, please name all your child's belongings especially their lunchboxes, drink bottles and hats. It is quite amazing how many of these look the same and can get misplaced.

Important dates:

Friday 12th Feb - Welcome BBQ

Monday 22nd Feb - Student class photos

Tuesday 23rd Feb - Sushi Day

Friday March 5- Curriculum Day (student free day)

Monday 8th March - Labour Day (no school)

Friday 26th March - Twilight Easter Market

Tuesday 30th March - Sushi Day

Thursday 1st April - Last day of Term 1 - 2:30pm finish

If at any time during the year you have any queries, questions, insights or observations on how we can help your child, please don't hesitate to come and see your child's teacher. We'd love to hear from you.

Kind regards,

The Year One team :)