

Welcome to Year 2!

Welcome back to what will be another fantastic year at Edithvale Primary School. In 2021, the Year 2 team is made up of 5 teachers: 2A – Rachael Seedsman, 2B- Hayden Callahan 2C- Scott Chalwell 2D- Mel Hatton/ Amy Laphorne We are excited to be able to work with such an enthusiastic bunch of students. Being in Year 2 will be very exciting and the students will be working very hard to achieve their goals. Our aim is to build on their first two years of schooling and extend your child’s understanding across all areas of the curriculum in engaging ways.

We have high expectations of every child and will encourage and support the children to do their very best at all times. Of particular importance to us is for students to:

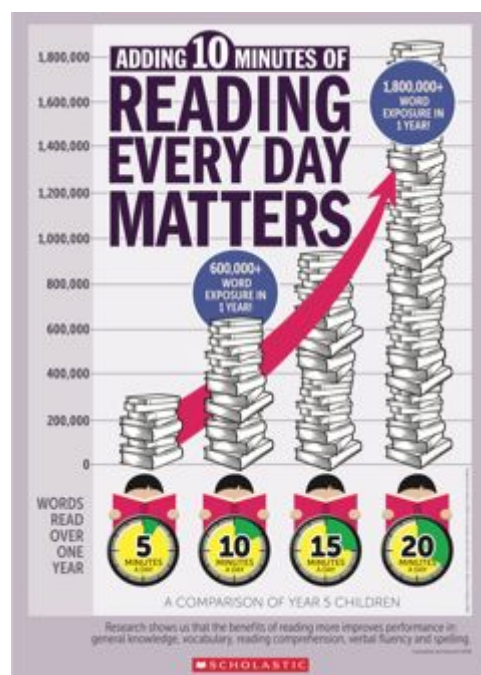
- be curious learners keen to contribute, learn and share with others
- have a growth mindset believing that they can achieve as they put effort into all tasks and activities
- demonstrate respect for each other, their teachers, visitors and the school environment
- be team players, able to challenge and support one another as they develop their social, emotional and academic abilities

PURPLE POCKETS AND HOME LEARNING

The purple pockets are a great way to communicate between home and school. These need to be brought to school every day and checked nightly for any notices. In Term 1, our main focus for home learning will be reading every night (approx. 10-15 minutes). We encourage parents to not only listen to their child read the book but also discuss the text. Some questions you might like to ask your child to spark a conversation could be:

- What could this text be about? Why do you think that? Or What do you think will happen next?
- How is this story like another story you know?
- What was the problem in the story? How was it solved?
- Who is the main character? How do you think the character felt when happened?
- Are there any new words you have read? What do you think they mean?

Information regarding SEESAW home reading resources will be available shortly.



SEESAW

As a school, we will continue using Seesaw in 2021. Your child will receive a new login/ QR code shortly to give them access to their new learning space for their current class. This space will be used to create a portfolio of the students reflections throughout the year and for home learning activities. Extra support or extension activities will also be sent for those students who we think would benefit from it. We look forward to using this space as a great way to share your child’s successes throughout the year and give you, the parent, some extra insight on how we teach certain skills, so you can best assist your child if needed.

SPECIALIST TIMETABLE FOR 2021

	2A	2B	2C	2D
Art	Monday 9:20	Monday 10:10	Thursday 9:20	Thursday 9:20
French	Thursday 10:10	Monday 9:20	Monday 10:10	Thursday 10:10
Robotics	Wednesday 9:20	Wednesday 10:10	Wednesday 12:35	Wednesday 11:45
Phys Ed	Thursday 9:20	Tuesday 10:10	Monday 9:20	Monday 10:10
Science	Monday 10:10	Thursday 9:20	Thursday 10:10	Monday 9:20

PHYSICAL EDUCATION

The Physical Education program provides students with opportunities to make decisions to enhance their health, safety and participation in physical activity. This term students in grade two will participate in a variety of games, partner challenges and group activities to refine and master fundamental motor skills. The program aims to provide students with the opportunity to work cooperatively with others in a fair and safe way.

ART

The Visual Arts program aims to provide for and nurture student learning through a variety of sequential activities that develop fine motor skills, and link to learning in the classroom where possible. In year 2 students build on their experience with using the art elements of line, colour, shape and texture. They explore a variety of materials and techniques. Students are encouraged to respond and reflect on their own artwork and the artwork of others.

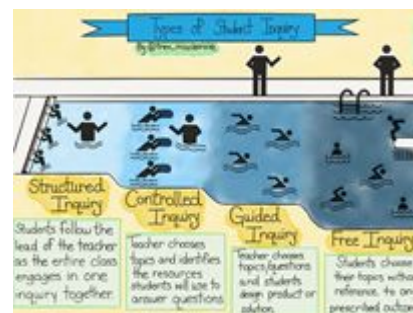
FRENCH

The French program will consolidate the students' learning of oral language by listening to the sounds, shapes and patterns of French through activities such as rhymes, songs, clapping, action games, imitation and repetition of sounds modelled by the teacher and oral texts. Students become familiar with the French language mechanism, including pronunciation, repetition, rhythm and pitch.

PROJECT BASED INQUIRY

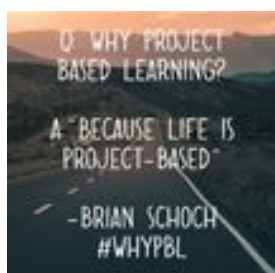
What is PBIL?

Project Based Inquiry Learning is our Whole-School approach to exploring key ideas across the Victorian Curriculum in a different and engaging way. Each project is authentic and has a real world-context where students are collaborating, creating, researching and designing in order to answer their **big question** posed at the beginning of their unit. A key feature of this approach to learning is that it is driven by student voice and choice in the way that they design a product, how they work and how they use their time. How this looks differs as students' progress through the year levels ([see Types of student inquiry image >>](#)). Each unit of inquiry culminates in a public product where students are able to showcase their learning to those beyond the classroom.



Why PBIL you might ask?

"Project-based learning experiences give students opportunities that they would never have in school otherwise." (Juliani, 2018)



What does PBIL look like in Year 2 this term?

Our big question is "***How can we, as travel agents, inspire our parents to take us to another continent?***"

Our focus for PBIL this term is going to be Geography. Students will explore countries and continents around the world and we will be investigating the location, geographical features, tourist attractions (both physical and man made), cuisines, customs, native animals and inhabitants of these places. As they explore, the children will be choosing a continent of interest to them and creating some items to present as part of our Travel Expo.

Stay tuned for more information as the term progresses.

WELLBEING

The wellbeing of our students is really important as we seek to have happy, healthy and active kids at EPS. This year throughout the school we will have a dedicated Wellbeing time each afternoon with teachers using a variety of resources to support the mental, physical, social and emotional wellbeing of our students. Teachers will employ a range of strategies including circle time and restorative practice discussions in addition to our key programs which include:

- The Resilience Project focusing on gratitude, empathy, mindfulness (G.E.M) and ways to practice these in everyday life with emotional literacy included to promote positive mental health
- Resilience, Rights and Respectful Relationships to develop social, emotional and positive relationship skills
- The Zones of Regulation guiding students in becoming more aware of and independent in controlling their impulses, sensory needs and improving their conflict resolution skills

A student's wellbeing affects every aspect of their time at school and as such teachers will be responsive to the needs and issues affecting their individual classes when deciding on which wellbeing activities to employ each day.

ENGLISH

Reading

The CAFÉ strategies that we'll be focusing on this Term are Accuracy, Extended Vocabulary and Comprehension. The students will be encouraged to use Phonemic Awareness strategies to decode unfamiliar words in texts. They will be assigned reading material specific to their developing skills, and complete tasks in guided reading groups. Students will explore a variety of text types which will include both fiction and non-fiction reading passages to assist with comprehension strategies.

Writing

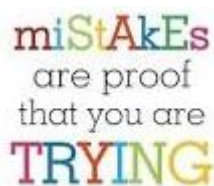
Our aim is for the students to enjoy writing, have plenty of opportunities to share their writing and take pride in their work. Students in Year 2 will continue to follow the Seven Steps to Writing Success program where we provide engaging writing lessons to motivate students to write in creative and interesting ways. We will focus on sentence structure and in particular how to develop interesting sentences using descriptive words and maintain correct use of punctuation such as using capital letters, full stops and question marks correctly. Students will be encouraged to extend their sentences dependent upon their abilities and capture their readers attention through using a variety of sentence starters. Additionally, students will be using their 'Writer's Notebook.' Sometimes students can struggle with getting started on their writing or thinking of ideas to write about. The Writer's Notebook allows students to take in the world around them by informally writing, drawing, or pasting ideas into their special book. For example, students might glue in an airplane ticket from their recent trip, a postcard from a relative, quotes, random facts, dreams, ideas for the future, interesting characters or settings, etc. It's a fun and creative way students can gather their ideas, which then can be used to create amazing writing pieces.



Spelling

Phonics and Phonemic Awareness is a major focus with Literacy at Edithvale. A new structure that will commence this year is a daily practice of Phonics. Students in each classroom across the school, will spend the first 20 minutes of each day practicing sounds of the Alphabet code through the use of Orton and Gillingham sound cards. Additionally, students will be learning Phonemic Awareness strategies to assist with decoding skills. As part of our Daily 5 mini lessons, weekly sessions will focus on identifying long/short vowels, digraphs, blends, and basic morphology of words.

MATHEMATICS



All teachers at Edithvale Primary follow the 'Booker' Sequence for teaching Maths. This developmental sequence is used for teaching all place value/number skills and four processes: addition, subtraction, multiplication and division. The purpose is to help students have a strong understanding of number concepts.

This term, we will have a large focus on place value. Students will consolidate their understanding of 2- and 3-digit numbers. Students will work in Maths groups focusing on 'Number' throughout the week that target their individual learning needs. They will be encouraged to set goals and discuss their progress and achievements throughout the year with their peers and teachers.

In applied Maths sessions, we will be focusing on data, position and location. Students will be collecting data and learning how to present this effectively on a tally and graph. They will also be learning how to use a calendar to locate certain dates and information and naming and ordering seasons and months in a year.

Students will have many opportunities to take part in hands-on learning activities and open-ended tasks that will aim to challenge and engage them, whilst allowing them to make their own discoveries and share their learning with others.

Essential Assessment - Sunset Maths

Essential Assessment is an online platform that can be used by students to assist them to continue to develop from their current understanding in relation to the Maths curriculum. Later this term, students will receive a login for 'My Numeracy' and 'Sunset Maths' along with instructions on how to access the platform. Sunset Maths will be replacing the previously used Mangahigh program.

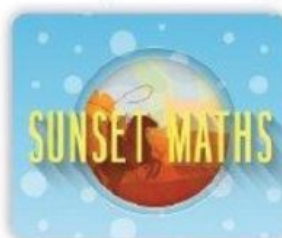
My Numeracy™ & My Literacy®

Students are able to complete their My Numeracy™ and My Literacy® activities which have been set up based upon the concepts that have been misunderstood in their pre-assessment and they are available for use within each sub-strand. The message board will assist the student to determine which activities need to be completed by which date.



Sunset Maths

Sunset Maths is an application aimed at developing the student's mental maths skills. This is available through the games icon and sets up based upon the student's pre-assessment results. The student will work through curriculum aligned content to develop their knowledge in each operator in alignment with their learning.



DIGITAL TECHNOLOGIES

Each Year 2 class has undertaken a detailed discussion around safe and appropriate use of technologies. Thank you so much for partnering with us and our ICT agreement form to ensure students are aware and accountable for the choices they make when using technology devices at school. Students will participate in more lessons on cyber safety and being cyber smart citizens. Students will explore different educational APPS on the iPads and learn how to insert pictures into a slideshow.

ROBOTICS

Year 2 are lucky to be participating in Robotics sessions throughout semester 1. The unit will have a lot of opportunities for the students to work on their cooperative teamwork skills, thinking and problem-solving skills. The year 2 students will be working with 'Ozobots' (which are small robots that can be coded using colour sequences).



SCIENCE

This year classes across the whole school will enjoy a 50 minute specialised Science lesson each week. These sessions will take place in the newly constructed science room and be an exciting addition to the learning done at our school. The 4 key domains of science; Physical, Chemical, Biological and Earth and Space will be covered throughout the year and provide students with classroom learning that assists them in understanding their world around them. This term students will enjoy a unit of work on Physical Sciences where they will develop understanding through a variety of hands on experiences and collaborative opportunities. The key learning for students this term will be around different forces and the ways in which energy can be produced.

Key Dates:

Friday February 12- Welcome BBQ
Friday March 5- Curriculum Day (student free day)
Monday March 8- Labour Day (student free day)
Friday March 26- Easter Market
Thursday April 4- Last day of school

Please feel free to drop in for a chat if you have any issues, concerns or just want to say hello. On Monday mornings we have a whole staff briefing and Tuesday afternoons we have professional learning meetings. On any other day our door is wide open before or after school.

Kind regards,
Grade 2 team :)