

Year 5/6 Term 2 Newsletter

Welcome to Term 2! We hope you all had a wonderful break and are ready for another big term at EPS. Some things to look forward to this term include Cross Country, NAPLAN, Inter-School Sport and CAMP!!

We are also excited to invite parents into the classroom to share and contribute to the classroom learning. This is an extremely valuable piece to your child's learning and confirms to them that authentic learning opportunities come from the community as a whole. If you have half an hour or an hour free every so often, we would love to get you in to support the learning. You don't need to be an expert in any field; your role would be to support students who may have questions, facilitate further discussion with small groups or engage with the students or encourage them as they learn. Please contact your child's teacher if you're interested and thank you to those who have already raised their hands to assist.

The Semester report will be available to parents via COMPASS at the end of Term 2. This will include details about students' achievements measured against the Victorian Curriculum. The information contained in each report will provide a quick snapshot of your child's progress in the areas that have been taught during the term and semester. Each year level will have different foci and as such, the reports will contain some differences from year level to year level.

Term 1 really flew and now we embark on a big Term 2 and with that a refocus on how we can individually contribute to school culture. We will continue to strive to empower all of our students to develop a 'Growth Mindset'. We praise our students for putting in effort and persisting with their learning because when students believe they can get smarter, they understand that effort makes them stronger.

Each teacher has high expectations and will expect your child to do their best at all times. As a 5/6 cohort we:

- challenge and support one another
- promote creativity and imagination
- respect our peers, teachers and environment and
- reframe problems as opportunities

At the beginning of the year, each class discussed class expectations as to how we should act and behave in our classrooms. On top of that, our students have signed agreements relating to their rights and responsibilities throughout our school and agreements relating to acceptable use of the ICT resources. They should be fully aware of what we will and won't accept and understand the consequences of poor behaviour. Your child's teacher will contact you if we think you should be informed of the consequences that are in play at school.

We value a home and school partnership and we encourage you to continue to communicate with us if you have any queries or concerns. You will see your child's teacher on the asphalt every afternoon, so please come and say hello. This would be an ideal time to arrange a follow-up meeting about your child if you think it is necessary.

The following is an overview of our structures and programs that aims to help inform you of what we teach and how we teach. This term we will focus on:

WELLBEING-

During term 2, we will continue to prioritise the Wellbeing of our students with a 30 minute Wellbeing session daily. The Resilience Project and The Resilience, Rights, and Respectful Relationships Initiative will be our key programs that will help guide our Wellbeing lessons. Some of the benefits from these programs are:

- Improved confidence and self-esteem, especially in relation to their peer relationships

- Improved wellbeing and ability to express emotions
- Improved knowledge and communication of emotions
- Improved relationships both at school and at home
- More supportive classroom environments

Some useful links and further information are listed below ;

<https://theresilienceproject.com.au/>

<https://fuse.education.vic.gov.au/ResourcePackage/ByPin?pin=2JZX4R>

<https://www.zonesofregulation.com/learn-more-about-the-zones.html>

ENGLISH (READING)-

We continue to follow our reading program CAFE and Daily 5 in year 5 & 6. The CAFE portion of the program is where students are explicitly taught reading strategies that they can apply when completing independent reading tasks. We will be applying these skills to NAPLAN style questions as a whole class and having many discussions around what each text tells us and how we can use prior knowledge to infer meaning. Students will again be encouraged to use Phonemic Awareness strategies to decode unfamiliar words in texts. During term 1, we saw fantastic results from this targeted focus and we look forward to seeing further progress this term. Students will work on a variety of texts that will deepen their level of comprehension and work alongside other students of similar reading ability. Our reading texts will include novels, newspaper articles and recounts.

Edithvale Primary School are again participating in the The Premier's Reading Challenge this year. There is no longer an online honour roll for the challenge so consent is no longer required. Class teachers will record the books read to children at school and they will complete the challenge simply based on these books.



ENGLISH (WRITING)-

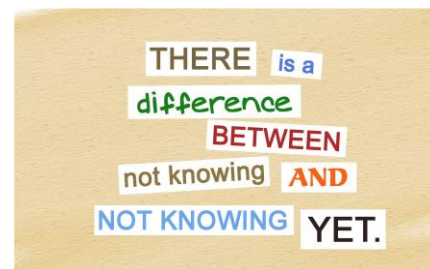
This term our writing focus will be centered on Persuasive Texts. Students will explore a range of persuasive language devices that help them to develop convincing arguments to support their opinions in both written and oral forms. They will plan, draft and publish a persuasive text and participate in a debate to demonstrate and express their opinions.

Our writing sessions will also utilise the 'Writer's Notebook', creating a place to contain all their ideas, thoughts and draft work in progress.

We will continue to explore and develop students' vocabulary to enhance their writing, and improve grammar, spelling and punctuation accuracy.

MATHEMATICS-

Our students will be spending some time each week in their own classrooms with their classroom teacher and with targeted teaching groups with perhaps another teacher. Through this, students are gaining experiences of various styles of teaching as well as receiving an abundance of opportunity for collaborative learning and multiple exposures to mathematical concepts and skills. This term in class, the topics to be covered include Location- maps and directional language and Chance and Probability as well as Number and Place Value.



All teachers at Edithvale Primary follow the 'Booker' Sequence for teaching Maths. This developmental sequence is used for teaching all place value/number skills and four processes: addition, subtraction, multiplication and division.

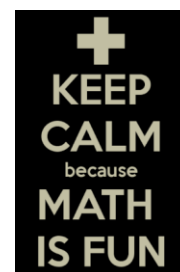
Essential Assessment is an online platform that can be used by students to assist them to continue to develop from their current understanding in relation to the Maths curriculum. Students should have received a login for 'My

Numeracy' and 'Sunset Maths' along with instructions on how to access the platform. **Sunset Maths** has replaced the previously used Mangahigh program.

Below are some maths links that might assist in home learning inspirations;

- Nrich- <https://nrich.maths.org/primary>
- Youcubed- <https://www.youcubed.org/>
- Resolve- <https://resolve.edu.au/>

For additional ways to reinforce your child's learning at home you may also like to try <http://www.math-play.com/place-value-games.html> for some fun interactive tools for learning. Finally, a great resource for making maths fun for students' at home is Maths Playground <https://www.mathplayground.com/>.



ICT-

We will be using a range of devices within our learning this term and integrating these devices throughout all learning areas. One program our students will explore is, TinkerCad, which is a design program that connects with our school's 3D printing. Students will work through learning modules before creating a final project to be printed using the 3D printers. Our Project-Based Inquiry will focus on Creating Supportive Learning Environments this term, so we will be learning researching skills and collecting and displaying data using ICT to aid us in our Project. We will also be learning the basics of folder structures and keeping ourselves/work organised appropriately. A specialist class in Robotics will also form part of our ICT learning this term. These sessions will be for 50 minutes each week and the students will enjoy learning about and creating projects with different technologies.

PROJECT-BASED INQUIRY LEARNING-

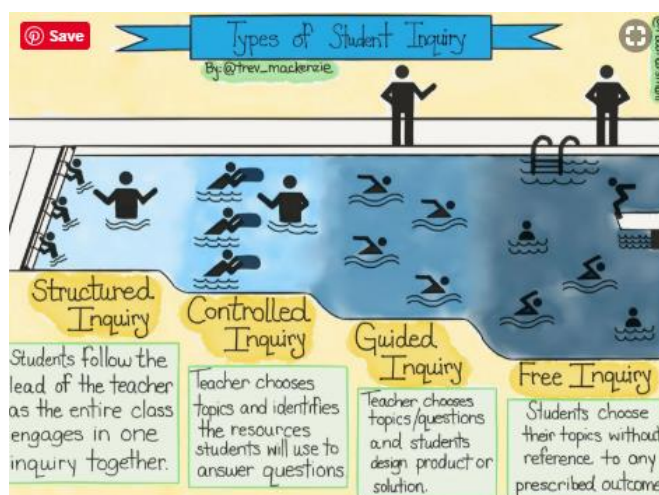
What is PBIL?

Project Based Inquiry Learning is our Whole-School approach to exploring key ideas across the Victorian Curriculum in a different and engaging way. Each project is authentic and has a real world-context where students are collaborating, creating, researching and designing in order to answer their **big question** posed at the beginning of their unit. A key feature of this approach to learning is that it is driven by student voice and choice in the way that they design a product, how they work and how they use their time. How this looks differs as students' progress through the year levels (see Types of student inquiry image >>>). Each unit of inquiry culminates in a public product where students are able to showcase their learning to those beyond the classroom.



Why PBIL you might ask?

"Project-based learning experiences give students opportunities that they would never have in school otherwise." (Juliani, 2018)



What does PBIL look like in Year 5/6 this term?

Our big question is - **How might we design a positive and supportive learning environment in our classroom?**

Within this question will be a focus on investigating:

- How do other schools in Australia create a positive learning environment?
- How do schools from other countries create a positive learning environment?

- Interviewing other students to get their thoughts on how to create a supportive learning environment

To answer this question Grade 5/6s will be learning how to use and implement the Design Thinking approach. Design Thinking is about working together as a team. We know that by working together and collaborating with others, we will find better solutions. Within the Design Thinking process students will be researching through observation and interviews, finding similarities and differences in each other's research, from this they will come up with ideas and solutions to the question, finally they will create and test prototypes until they have a final solution they are happy with.

Our students will need to create a final product which shows how they would create a positive learning environment in their individual classrooms.

HEALTH-

Our students have shown great interest in learning about how the human body works and we are investigating the 10 body systems over the course of this term. They will apply their knowledge of healthy bodies to an advertising campaign that promotes health and wellbeing to the community.

SCIENCE-

The Science program provides students with hands-on science experiences where they can construct their own scientific understandings. This term, students have been working within Chemical Sciences to explore the Physical and Chemical changes that substances or materials can go through. This extends to students' understanding of states of matter which include, solids, liquids and gases and of how substances behave when put under stress or change temperature. Students will implement a range of science inquiry skills such as; questioning, planning, communicating and analysing.

ROBOTICS-

Year 5/6 students are lucky to get straight back into robotics for Semester 1. We will further their knowledge of block coding and manoeuvring of the 'Sphero Bolt' using a range of different speeds, lengths and angles. Students will focus these skills towards our big questions of "How can we turn our sphero into a golf ball?"

ART-

The visual art program aims to provide students with many opportunities to learn about and create art, while working with a variety of materials, and participating in activities that develop fine motor skills. This term students will be working on wax resist art, drawing, and a big sculpture project using plaster. Look out for posts on Seesaw showcasing student work.

PE-

This term in Physical Education the development of fundamental motor skills and movement patterns will be combined into a games-sense approach. This term students will focus on the different strategies, roles and game tactics involved in invasion games such as basketball, netball, handball, AFL, and soccer. Students will learn to apply rules fairly, communicate and problem solve in teams or groups.

FRENCH-

The French program will aim to develop students' awareness of the French language and culture. Students will ask and answer questions in complete sentences, in familiar contexts, using appropriate pronunciation, intonation and non-verbal communication strategies. The students will recognise appropriate forms of address for different audiences, using *tu* forms with friends and family members, and using *vous* for teachers and other adults or when more than one person is involved. The students will continue to develop research skills through the use of

dictionaries/Google translate and work independently on defined projects using Language online & Languagenut (Assessment online).

HOME LEARNING AND SEESAW--

As a school, we will continue using Seesaw in 2021. This space will be used to create a portfolio of the students reflections throughout the year and for home learning activities. We look forward to using this space as a great way to share your child's successes throughout the year and give you, the parent, some extra insight on how we teach certain skills, so you can best assist your child if needed.

At home, students should be reading each night and are encouraged to log-on to My Numeracy to complete set tasks when it is appropriate to do so. There will be times throughout the term where, as part of our PBIL, some research and preparation will need to be done at home as well as any unfinished work from English or Maths Groups.

YEAR 6 INTERSCHOOL SPORT-

Each Year 6 student will represent our school at Interschool Sport this year. In term 2, the sports which will be played are Football, Netball and T-Ball. All of the dates on the fixture are subject to weather and will be cancelled on the morning in case of bad weather. We would love some parental help on the days of Interschool Sport, whether it be in a coaching capacity or just simply to support our students. Please chat with your child's teacher if you would like help.

KEY DATES TERM 2-

NAPLAN	May 11th- 13th
Education Week	May 24th -28th
District Cross Country	June 1st
Camp	June 9th- 11th
KABOOM Sports	June 23rd
Interschool Sport	April 30th- Rd1 vs Chelsea (home) May 7th- Rd2 vs Cornish (away) May 14th- Rd3 vs Aspendale (away) May 21st- Rd4 vs Seaford (home) May 28th- Rd5 vs Seaford North (away)
Lightning Premiership	Friday 4th June (various sports)